



LIGHTING



INSPECTION LAMPS

669

Inspection lamps
Inspection lamp - Bodywork

669
673



SPOT LAMP

676

Spot lamp

676



LED PEN LAMPS AND TORCH LIGHTS

674

Led pen lamps and torch lights

674



FLUORESCENT INSPECTION LAMP

678

Fluorescent inspection lamp

678



PEN TORCH

675

Pen torch

675



FLUO

RFID



SELECTION GUIDE



Lighting: the key to safe and accurate work

Comfort and efficiency

- It is essential to use light suitable for the application to avoid tired eyes and accidents at work.
- Engineering or maintenance tasks require an illumination of 300 to 500 lux.
- Inspection, finishing and painting tasks require an illumination of 750 to 1,000 lux.
- The light source must be designed and arranged to avoid uncomfortable glare.

There are a number of lighting technologies to choose from:

TECHNOLOGY	ADVANTAGES	DISADVANTAGES	LIGHTINGPOWER	FACOM OFFER
Fluorescent and compactfluorescent lamps	Diffuse lighting, low temperature, low consumption	Average impact resistance	300 to 400 lux	777 range
LEDs	Very good impact resistance, low temperature, very low consumption, long operating life.	Cost, concentrated light beam	300 to 1,000 lux	779 range

24 V IP 55 INSPECTION LAMP



INSPECTION LAMP IP 64



SAFETY

For your safety, the supply voltage of inspection lamps used for working inside the body of a vehicle must not exceed 50 V.



IP rating: What does it mean ? (e.g. for a 4.5 V IP 64 inspection lamp)

1st figure (e.g. IP 64): Protection of live components against ingress of solid objects		2nd figure (e.g. IP 64): Protection of live components against ingress of liquid	
0	No protection	0	No protection
1	Solid objects greater than 50 mm diameter cannot penetrate	1	Vertically falling drops of water
2	Solid objects greater than 12 mm diameter cannot penetrate	2	Water dripping on the enclosure tilted at 15° from its normal position
3	A steel wire of 2.5 mm diameter cannot penetrate	3	Spraying water at an angle of up to 60° from the vertical
4	A steel wire of 1 mm diameter cannot penetrate	4	Splashing water against the enclosure from any direction
5	Invisible amount of talcum powder deposited when tested in a dust chamber	5	Water projected in jets (6.3 mm) against the enclosure from any direction
6	No talcum powder deposited when tested in a dust chamber	6	Water projected in jets (12.5 mm) against the enclosure from any direction
		7	Immersion to 1 m
		8	Submersible equipment according to manufacturer's specifications

779.CL4 CORDLESS LED INSPECTION LAMP

Long-lasting power and constant brightness

Very long LED lifetime, white fluorescent lighting with diffusing lamp. Constant lighting for 5h (146 lumens / 350 lux at 0.5 m). High capacity Li-ion battery without memory effect.

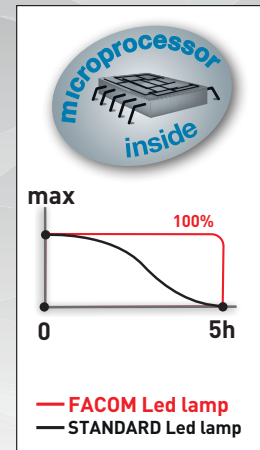
High strength

- Antishock structure (IK 08).
- Withstands workshop solvents, current chemicals and water spray (IP 55).



Long operating time

- 5 hours constant lighting.
- Fast charging 2h30.
- Flashes for 15 mn before the lamp discharges.



Handy and safe

- The lamp does not overheat.
- Suspension hook rotating over 360°.
- Magnet, wall- or workbench-mounted charger.



■ Cordless LED inspection lamp

- Wide working light beam: 350 lux at 0.5 m.
- Up to 5h operating time.
- Wall-mounted charger.
- 360° hook and hidden magnet for hands-free use.
- Charging time: 2h30.
- Protection against shocks IK 08.
- Environment protection IP 55.
- Operating temperature: -20 / +70 °C.
- Supplied with a mains charger (cable 2 m) 100-240 V and support base for wall- or workstation-mounting.



	Width l [mm]	L [mm]	L [mm]	ΔΔ [g]
779.CL4	58	243	243	380

779.PCA "POCKET" LED LIGHT



Hands free lighting

Quick and easy to attach

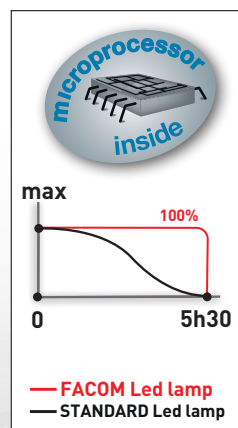
- To illuminate a work area, one hand is often needed to hold the lamp. The FVS Pocket leaves both hands free as it incorporates a range of options for attachment and light direction.
- Innovating clamp hook.
- Removable magnet.
- Flexible to turn it in all planes.
- Compact shape for easy positioning.

Long autonomous operation

FVS Pocket is a genuinely professional lamp, no need to change the batteries. Equipped with a rechargeable ion battery, it provides 4 hours of continuous operation and recharges in only 2 1/2 hours.

Professional quality

- Designed to the same specifications as the 779.CL4, it provides 4 hours of constant illumination and is very resistant to impact, workshop solvents and water (IP55).



Facom Vision System FVS POCKET



- Cordless pocket lamp supplied by rechargeable Li-ion batteries.
- Operating time: 5h30, fast charge: 2h30.
- Microchip-controlled charging and lighting.
- Lighting level constant throughout the operating time.
- High power LED: 73 Lumens
- Shock-proof case. Lamp swivels at 360°, hook, magnet.
- Supplied with: charger 230 V, power supply cable, user manual and strap.



FACOM	H [mm]	Width l [mm]	L [mm]	ΔΔ [g]
779.PCA	130	30	65	210

INSPECTION LAMPS

Head lamp with motion sensor

- Motion sensor: switches the lamp on and off without touching it.
- 2 brightness settings: Normal – 50 lumen. Boost – 200 lumen.
- Rotation around the vertical axis: 104°.
- Maximum operating time 16 hours in normal mode and 4 hours in boost mode.
- IP 54
- Runs on 3 AAA batteries supplied.
- Adjustable elastic strap.

	$\Delta\Delta$ [g]
779.FRT2	128



LED pen light

- Wide and powerful lighting inspection lamp with 6 LEDs.
- 36 lumens .
- 100 Lux at 1 meter.
- 8-hour continuous operating time.
- Splash-proof IP54.
- Clip to fasten the lamp to a pocket or other holder.
- Convenient magnetic bracket.
- Additional magnetic bracket strapped with Velcro.
- Runs on 3 AAA batteries supplied.

	Width l [mm]	L [mm]	$\Delta\Delta$ [g]
779.PEN	16	156	65



779.SILR EXTRA-FLAT INSPECTION LAMP



Lighting for difficult and confined access

Exceptional strength

- Extra-flat lamp used to light difficult access confined zones.



- Exceptional resistance to shock, water, oil, grease, workshop solvents and chemicals.
- Fastening system available for use at height.
- Attachment hole for 1/4" magnet for hands-free work.
- Fast charge ~ 3h (~ 6h via USB cable).
- High capacity Li-ion battery.
- Supplied with a 230V mains charger, a cigar lighter charger, a USB cable.

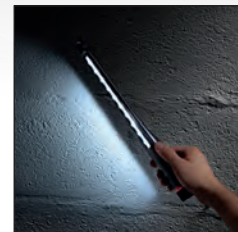
Flexible suspension hook
Facilitates fastening and unfastening.



Standard mode

For working close without glare.

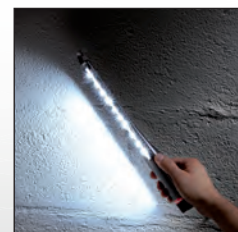
8h
175 lux - 0.5 m



'Booster' mode

For inspection work and increased visibility.

4h
350 lux - 0.5 m



INSPECTION LAMPS

Cordless LED slim inspection lamp



- Extra slim slim body.
- 2 power settings.
- Resistant to oil, solvents and other chemicals used in a workshop.
- Hook free semi rigid avoiding the pulling of the hook or cable.
- Comes with a removable magnet with screw ref. 779.MAG.
- Supplied with 220V mains charger, 12V cigarette lighter socket and USB plug.
- Point of attachment for more safety especially when working at height.
- Battery / mains power source / 12 V / USB.
- Autonomy: 8h in standard - 4h in Boost.
- Charging time (Std / USB): 3h standard - 6h Boost.
- Lux 0.5 m (Std / Boost): 175/350 lux.
- Brightness (Std / Boost): 120/240 lumens.
- Width (Handle / Body): 45/29 mm.
- Depth (Handle / Body): 25/12 mm.
- Operating temperature (° C): -20 / + 70.

779.SILR	L [mm]	ΔΔ [g]
	329	160

Corded LED slim inspection lamp



- Extra slim slim body.
- 2 power settings.
- Resistant to oil, solvents and other chemicals used in a workshop.
- Hook free semi rigid avoiding the pulling of the hook or cable.
- Powered by either AC outlet, 12V cigarette lighter or USB plug.
- Comes with a removable magnet with screw ref. 779.MAG.
- Delivered with 5 m Kevlar cable with secure lockable connection and sustainable.
- Point of attachment for more safety especially when working at height.
- Power source: mains / 12 V / USB.
- Lux 0.5 m (Std / Boost): 300/600 lux.
- Brightness (Std / Boost): 200/400 lumens.
- Width (Handle / Body): 45/29 mm.
- Depth (Handle / Body): 25/12 mm.
- Operating temperature (° C): -20 / + 70.

779.SILC	L [mm]	ΔΔ [g]
	329	120

Adaptable magnet for Slim lamp



- Soft coating.



779.MAG	ΔΔ [g]
	16

INSPECTION LAMP - BODYWORK

779.CML BODYWORK INSPECTION LAMP

2-in-1 lamp ideal for paint and bodywork operations.



Warm light (4,500K)

- To check light coloured surfaces.



Cold light (6,500K)

- To check dark coloured surfaces.



Large lighting surface

- Contrasted and natural lighting: colours respected (IRC 95).
- Multi-position head swivelling at 360°.



Long Operating Time & Comfort

- 3h constant lighting: 500 lumen / 190 lux at 1 m.
- High power COB LEDs. Li-ion batteries.
- Attachment hook and magnet for more comfort.

■ Inspection lamp - bodywork

- Ideal to compare colour charts and detect imperfections on the vehicle's bodywork.
- Two lighting modes: cold 4500K hot 6500K.
- Operating time: 3 hours.
- Charging time: 4 hours.
- 1 magnet.
- 1 removable hook.
- Supplied with mains charger and USB cable (5 V - 2A).
- Beam pivots through 360°.
- Mains or USB charging.



	$\Delta\Delta$ [g]
779.CML	396

779.UH RECHARGEABLE LIGHT RAMP



2 Lighting powers

248 High power SMD LEDs.
2 modes available:
ECO 1000 lumens / 4h operating time
or
BOOST 2000 lumens / 2h operating time.

Handy

- Rechargeable lamp (Li-ion batteries), fitted with 2 hooks extensible from 1.40 m to 2.10 m.
- Visual charge indicator.
- Supplied with mains adapter.



Rechargeable light ramp



- Rechargeable engine compartment lamp.
- 2 lighting power levels:
 - ECO: 1000 lumen.
 - BOOST: 2000 lumen.
- Operating time:
 - ECO: 4 hours.
 - BOOST: 2 hours.
- Operates on mains.
- Supplied with charger 220 V 50HZ.
- Hook spacing: 1397 mm to 2108 mm.

	$\Delta\Delta$ [kg]
779.UH	1,338

Pen torch



- 1 3W LED.
- 110 lumen.
- 2 304 lux at 0.5 m.
- Running time: 3.5 hours.
- Protection rating: IP65.
- Batteries: 2 x AAA.
- Supplied with: 2 AAA batteries, strap and protection pouch.

	$\Delta\Delta$ [g]
779.PBT	58

■ Compact pen torch

- 1 3W LED.
- Adjustable light beam.
- 43 to 309 lumen according to the beam required.
- 39 601 lux at 0.5 m in maximum aperture.
- Maximum work time: 51.5 hours.
- Protection rating: IP65.
- Supplied with: 4 AAA batteries, strap and protection pouch.



	$\Delta\Delta$ [g]
779.CBT	176

■ Compact rechargeable torch

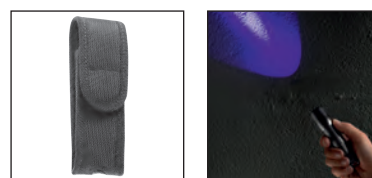
- 1 10W LED.
- Adjustable light beam.
- 175 to 814 lumen according to the beam required.
- 34 225 lux at 0.5m in maximum aperture.
- Maximum work time: 18.5 hours.
- Charging time: 6 hours.
- Protection rating: IP65.
- Rechargeable Li-ion battery.
- Chargeable by USB.
- Supplied with: 230V charger, USB supply cable, strap and protection pouch.



	$\Delta\Delta$ [g]
779.CRT	198

■ UV torch

- 1 1W UV LED.
- 395 to 410 nm.
- Operating time: 23 hours.
- Protection rating: IP67.
- Supplied with: 3 AAA batteries, strap and protection pouch.



	$\Delta\Delta$ [g]
779.UVT	118







FLUO

RFid



INSPECTION LAMP

RANGE OF HIGH PERFORMANCE LAMPS

	RECHARGEABLE LAMP 779.EYE	WIRED LAMP 777.SPOT	BLUETOOTH WIRED LAMP 777.SPOTBT
Constant lighting power.	 ECO: 500 lumen / 170 lux at 1 m / 8 h use. NORMAL: 1000 lumen / 340 lux at 1 m / 4 h use. BOOST: 1500 lumen / 500 lux at 1 m / 2 h 45 use.	 ECO LIGHT: 1500 lumen / 500 lux at 1m. NORMAL: 2500 lumen / 850 lux at 1m. BOOST: 5000 lumen / 1750 lux at 1 m.	 At 1 m: 2000 lumen/750 lux. 4000 lumen/1500 lux. 6000 lumen/2250 lux. 8000 lumen/3000 lux. 10000 lumen/3800 lux.
Indoor use. Outdoor use. COB LED.	●	●	●
Contrasted and natural lighting: true colours (IRC83).	●	●	●
HIGH STRENGTH: IP 67 water and dust resistant IK 07 shock resistant	●	●	●
180° rotating and	●	●	●
360° tilting bracket	-	●	●
FACOM Lighting application available for download on your smartphone or tablet. Controls the on/off mode and sets the light intensity via Bluetooth (up to 5 lamps)	-	-	●
Removable magnetized base	●	●	●
Base with a 3/8" insert for use on a tripod 779.TRIPOD	●	●	●

▪ Tripod for SPOT lamp



- For lamps 779.EYE, 777.SPOT and 777.SPOTBT.
- Threading for lamp fastening.
- Hook for power supply cable storage.
- Height adjustable from 76.5 to 225 cm.



	ΔΔ [kg]
779.TRIPOD	3,2

779.EYE – RECHARGEABLE SPOT LAMP

- Power Settings: Low / Medium / High.
- Lumens: 500 / 1000 / 1500.
- Base with powerful magnets for hands-free use.
- 180° Rotation.
- Run-time: 7.0 hours on Low mode.
- Cordless & Rechargeable, Corded .
- IP Rating: IP67.
- IK Rating: IK07.
- UNIQUE DESIGN.
- CRI: 85 keep a natural color.
- Optional Tri-Pod Stand : 779.TRIPOD.



	$\Delta\Delta$ [kg]
779.EYE	1,42

779.EYE – Rechargeable spot lamp

- Power Settings: Low / Medium / High.
- Lumens: 500 / 1000 / 1500.
- Base with powerful magnets for hands-free use.
- 180° Rotation.
- 360° Swivel.
- Run-time: 7.0 hours on Low mode.
- Cordless & Rechargeable, Corded.
- IP Rating: IP67.
- IK Rating: IK07.
- UNIQUE DESIGN.
- CRI: 85 keep a natural color.
- Optional Tri-Pod Stand :779.TRIPOD.



	$\Delta\Delta$ [kg]
777.SPOT	3,45

Bluetooth corded lamp

- 5 lighting power levels: 2000, 4000, 6000, 8000, 10000 lumens.
- Base with powerful magnets for hands-free use.
- Handles for easy transport and adjustment.
- 180° rotation.
- Swivels at 360°.
- IP 67.
- IK 07.
- Unique design.
- IRC 85: maintains natural colour.
- Bluetooth: can be controlled by an IOS or ANDROID application.
- The application can control 5 lamps.
- Tripod in option: 779.TRIPOD.
- Cable length: 5 m.



	$\Delta\Delta$ [kg]
777.SPOTBT	5,8



FLUORESCENT INSPECTION LAMP

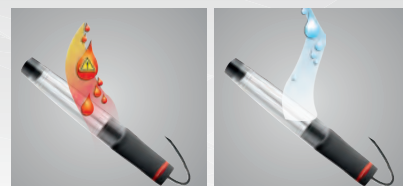
777 NEW RANGE OF FLUORESCENT INSPECTION LAMPS



470 lux - 0,5 m
320 lumens 11W

Light your workspace

- Suitable for mechanical and maintenance work.
- Broad white fluorescent light beam:
470 lux at 0.5 m (320 lumens).
- Anti-glare lens.



Tested strength

- No risk of burn, the lamp does not overheat.
- Sealed to water splashes (IP 55).
- Resistant to workshop solvents and regular chemical agents.
- Easy opening for changing the glass and fluorescent tube.



Hands-free lighting

- 2 magnets + 2 anti-rotation hooks at 360°.



Available in 4 versions

- 777B.230F: 230 V.
With 10 metre mains lead.
- 777B.24F: 24 V.
With 10 metre mains lead.
- 777A.230F: 230 V.
With 15 metre reel.
- 777A.24F: 24 V.
With 15 metre reel.

Fluorescent inspection lamp 24V



- Durable, powerful lighting.
 - Low consumption: 11W.
 - Fluorescent tube 11W.
 - Does not heat.
 - Protection rating: IP55.
 - Anti-glare lens.
 - 470 Lux at 0.5 m.
 - 320 Lumens.
 - H05 RN-F rubber cable: good resistance to hydrocarbons.
 - No transformer.
 - No cable winder.
 - Voltage: 24 V.
 - Cable length: 10 m.
- Spare fluorescent tube: 777B.BULD.
Spare lens: 777B.LENS.

	$\Delta\Delta$ [g]
777B.24F	450

Fluorescent inspection lamp 230V



- Durable, powerful lighting.
 - Low consumption: 11W.
 - Fluorescent tube 11W.
 - Does not heat.
 - Protection rating: IP55.
 - Anti-glare lens.
 - 470 Lux at 0.5 m.
 - 320 Lumens.
 - H05 RN-F rubber cable: good resistance to hydrocarbons.
 - No transformer.
 - No cable winder.
 - Voltage: 230 V.
 - Cable length: 10 m.
- Spare fluorescent tube: 777B.BULD.
Spare lens: 777B.LENS.

	$\Delta\Delta$ [g]
777B.230F	450

24V fluorescent inspection lamp with cable reel



- Durable, powerful lighting.
 - Low consumption: 11W.
 - Fluorescent tube 11W.
 - Does not heat.
 - Protection rating: IP55.
 - Anti-glare lens.
 - 400 Lux at 0.5 m.
 - 320 Lumens.
 - H05 RN-F rubber cable: good resistance to hydrocarbons.
 - No transformer.
 - No cable winder.
 - Voltage: 24 V.
 - Cable length: 15 m.
 - Cable reel: faster cable storage.
 - Supplied with orientable wall mounting.
- Spare fluorescent tube: 777B.BULD.
Spare lens: 777B.LENS.

	$\Delta\Delta$ [kg]
777A.24F	4.5

230V fluorescent inspection lamp with cable reel



- Durable, powerful lighting.
 - Low consumption: 11W.
 - Fluorescent tube 11W.
 - Does not heat.
 - Protection rating: IP55.
 - Anti-glare lens.
 - 470 Lux at 0.5 m.
 - 320 Lumens.
 - H05 RN-F rubber cable: good resistance to hydrocarbons.
 - No transformer.
 - No cable winder.
 - Voltage: 230 V.
 - Cable length: 15 m.
 - Cable reel: faster cable storage.
 - Supplied with orientable wall mounting.
- Spare fluorescent tube: 777B.BULD.
Spare lens: 777B.LENS.

	$\Delta\Delta$ [kg]
777A.230F	4.5



FLUO

Rfid

