



JETLINE+
SYSTEM

OVERALL WORKSHOP MANAGEMENT SOLUTION



JETLINE+ : A MODULAR, UPGRADEABLE AND INNOVATIVE WORKSPACE FOR ALL

WITH **JETLINE+
SYSTEM**
CREATE AN ORGANIZED,
FUNCTIONAL AND PLEASANT
WORKSPACE ENVIRONMENT

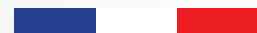
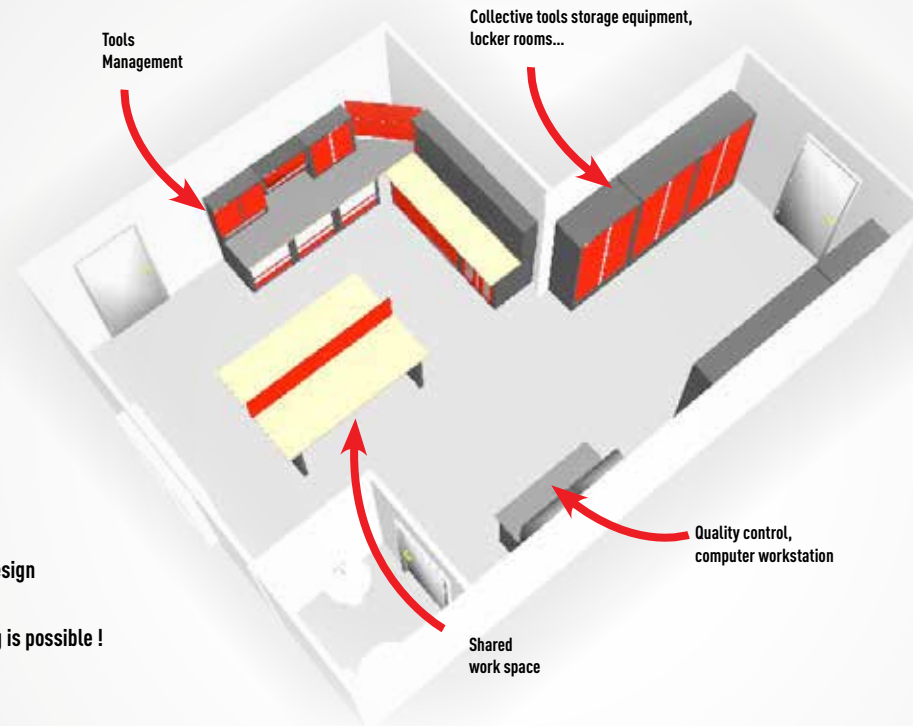
MAKE WORK EASY
Organize your workspace.
Save time and energy.

OPTIMISE YOUR SPACE !
Store also in height. The roller cabinet finally
finds its place under the worktop.

WORK COMFORTABLY
Two heights, large worktops.

NO MORE RESTRICTIONS
Thanks to its exclusive self-supporting structure, you can design
your set completely freely.

Create Star-shaped, back to back unit , U-shaped, everything is possible !



Made in France

BE PROUD OF YOUR WORKSHOP
Your workshop must attract as much by its aesthetics as its functionality,
its organized storage and cleanliness.
A clean and tidy workshop will be also very reassuring for your customers.



3D JETLINE + CONFIGURATOR DOWNLOADABLE ON WWW.FACOM

JETLINE+ SYSTEM Configurator

DESIGN YOUR WORKSHOP !

1 DRAW THE PLAN OF A ROOM

Matching the dimensions of your workshop. Adjust the colour and the texture of the floor. Place doors and windows so that your project matches your workspace.

2 CREATE YOUR COMPOSITION

Create sets of top and base units thanks to the wizards. They'll guide you all along the organisation of your furnitures. With the configuration wizards, every furniture is built automatically. For example a workbench comes with the appropriate worksurface, cross beam and legs. You're also allowed to place any unit from the items library.

3 PREVIEW THE RESULT IN 3D

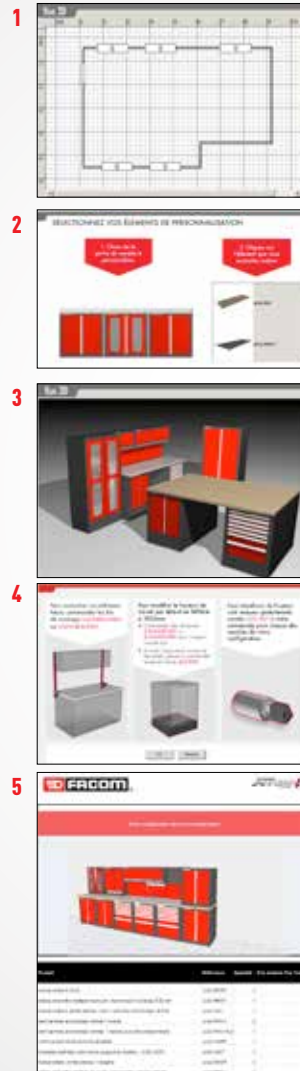
Your composition is displayed in 3 dimensions all along you design it. You can preview along with any angle, turn around, choose an aerial view or process to a virtual visit. The height of your eyes as well the angle of vision can be adjusted.

4 CHOOSE YOUR OPTIONS

Assembly kits, raising base to increase the working height to 1025 mm and unique key option.

5 EDIT YOUR QUOTATION

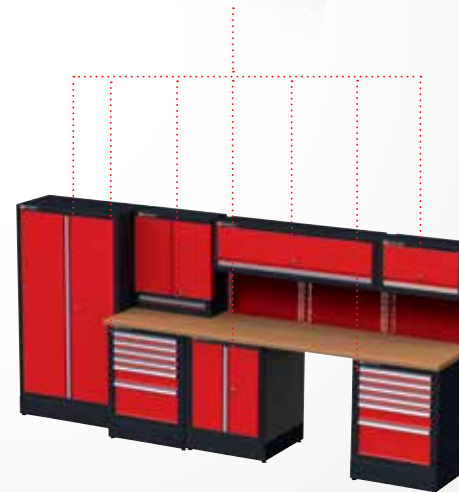
Once your workspace is realised, export the list of furnitures in MSExcel or PDF format. Show this list to your distributor and get it quoted.



NEW SERVICES

SAFETY : self closing drawers are fitted with **auto-return ball bearing slides**.

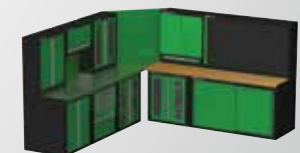
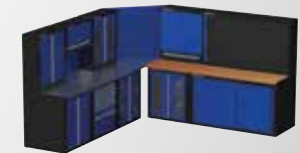
SO EASY TO USE : "ONE KEY" option **under request** - Interchangeable locks.



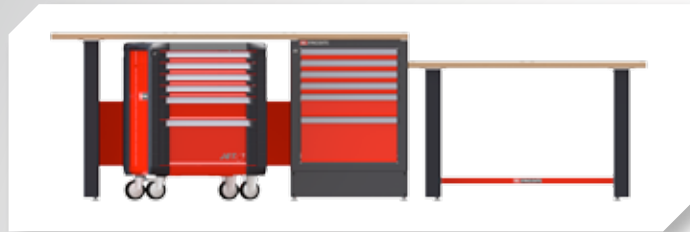
YOUR CUSTOMIZATION

L'ATELIER À VOS COULEURS

Allez encore plus loin dans la personnalisation en choisissant la couleur de vos meubles (nuancier RAL)



TWO HEIGHTS GIVEN THE CHOICE

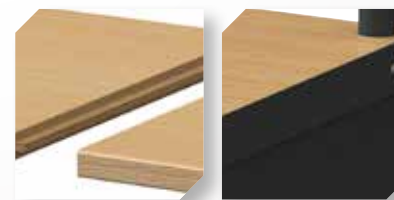


COMFORT IS ONE OF THE FUNDAMENTAL DATA TO WORK WELL. JETLINE ALLOWS YOU TO ADAPT THE HEIGHT OF THE WORKTOPS TO YOUR SIZE AND TO THE TASKS THAT YOU PERFORM.

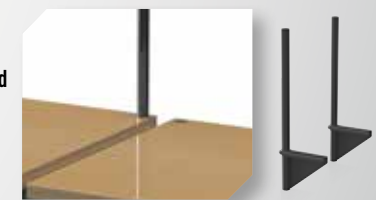
To increase the height from 850 to 1025 mm, you have just to add a raise base. Ideal for standing job and to optimize your storage space. Your roller cabinet finds a place under the work surface.

LARGE AND RESISTANT WORKTOPS

MORE SPACE TO WORK EVEN WITH A TOP UNIT.

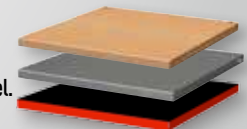


worktops are perforated to receive the fitting kits.



The new worktops adjustment system and the painted metal cover offer a perfect finishing.

3 finitions :
- multi-ply beech.
- 10/10th brushed stainless steel.
- metal + rubber mat.



SO EASY TO INSTALL

The fitting kits are now available in **two dimensions** : 400 and 800 mm.

JLS2-TUBESUP400



For half panel or top unit.

JLS2-TUBESUP800



For 2 stacked units.



Pre-drilled holes in the worktop provide passage for the fitting kits.



Base units are fitted with 4 pivoting jacks for adjustment ensuring perfect stability regardless of the type of floor.

NEW DESIGN

On line with JET+ roller cabinets

- Aluminium handles
- New colors:
red 3020 and black 9004



QUALITY

5 years warranty.


Made in France

BASE UNITS



REF. JLS2-MBSPP



REF. JLS2-MBSPV



REF. JLS2-MBDPP



REF. JLS2-MBS6T



REF. JLS2-MBS7T



REF. JLS2-MBS2TV

TECHNICAL UNITS



REF. JLS2-MBSEN



REF. JLS2-MBSPC/MHSPC

STORAGE CABINETS



REF. JLS2-A500PP



REF. JLS2-A1000PP



REF. JLS2-A1000PV

RAISING BASES

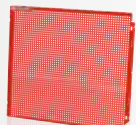


JLS2-BAEMBS

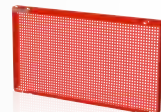


JLS2-BAEMBD

VERTICAL HOOKING PANELS



REF. JLS2-PAV1/2



REF. JLS2-PPAV1/2



REF. JLS2-PPAV1ELEC



REF. JLS2-PPAVA

TOP UNITS



REF. JLS2-MHSP



REF. JLS2-MHSPV



REF. JLS2-2201



REF. JLS2-MHDR



REF. JLS2-MHTR



REF. JLS2-CHS



REF. JLS2-CHD



REF. JLS2-CHSPP



REF. JLS2-CHDPP

ASSEMBLY AND ACCESSORIES



JLS2-TUBES



JLS2-LIGHT



JLS2-LIGHTSUP



JLS2-1KEY



REF. JLS2-TC

FEET AND CROSSBEAMS



REF. JLS2-TRAA2/3
REF. JLS2-TRAB2/3
REF. JLS2-TRBB3



JLS2-PSB
JLS2-PSH

WORKTOPS



JLS2-PB1/2/3/A



JLS2-PBST1/2/3/A



JLS2-PM1/2

6 DRAWERS

REF. JLS2-MBS6T

7 DRAWERS

REF. JLS2-MBS7T



- **Drawer useful size:** L.569 x D.421 x H.60 mm.
- Supplied with 3 sets of partitions for drawers 60 mm high and 1 set of partitions for drawers 130 mm high.
- Centralized locking, jointed keylock. Interchangeable lock.
- Fitted with 4 pivoting jacks for a perfect finishing.
- **Overall dimensions:** L722 x D701 x H810 (H985 mm with raising base JLS2-BASEMBS).

6 DRAWERS

- **4 drawers :** 60 mm high = 12 modules
- **1 drawer :** 130 mm high = 3 modules
- **1 drawer :** 270 mm high
- **Weight :** 79 kg

7 DRAWERS

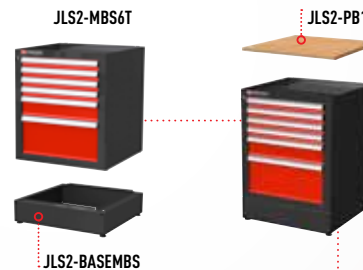
- **5 drawers :** 60 mm high = 15 modules
- **1 drawer :** 130 mm high = 3 modules
- **1 drawer :** 270 mm high
- **Weight :** 82,5 kg

RAISING BASE

REF. JLS2-BASEMBS



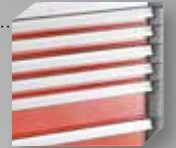
- To increase the height from 850 to 1025 mm (including 40 mm worktop).
- Epoxy painted sheet steel (thickness 12/10th). Has to be fitted with the 4 pivoting jacks delivered with the base unit for a perfect finishing.
- **Dimensions :** L720 x D699 x H80 mm - **Weight :** 15,5 kg



KEY POINTS

DRAWER HANDLES

Resistance : anti-oxidation anodized aluminum.
Comfort : exclusive FACOM design ensuring easy grip.
Time saving : drawer content identification thanks to the pictogram plate supplied with the unit.



DRAWERS

Safety : self closing drawers are fitted with auto-return ball bearing slides.
Customisable partitioning : removable partitions, foam or plastic trays.
3 modules by drawer : load resistance 30 to 50 kg.



CLOSING SYSTEM

'ONE KEY' option under request - Interchangeable locks.



2 DIFFERENT HEIGHTS

Low version **850 mm**
High version **1025 mm** thanks to raising base.



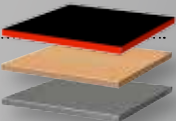
ACCESSORIES

Sides of the units can receive JETXL **lateral accessories** (See range of accessories in the F13 catalogue).



WORKTOPS

Multi-ply beech 40mm lined oil.
Wood + brushed stainless steel.
Metal + rubber mat.



FINISHING STAGE

New jacks with ball joint for an optimal adjustment.



2 VERTICAL DRAWERS

REF. JLS2-MBS2TV



- 2 vertical drawers with perforated panels with square holes that can be used on either side.
- Flexible attachment of stored items thanks to a wide range of hooks. (see F13).
- Panels dimension 600 x 600 mm.
- **Useful storage surface** : 1,6 m².
- **Load resistance** : 75 kg per drawer.
- Centralized locking system + interlock system to prevent multiple panels from being withdrawn.
- Fitted with 4 pivoting jacks for a perfect finishing.
- You can also stack 2 JLS2-MBSTV on, with a wooden top or a stainless top (metal top is forbidden).
- **Dimensions** : L722 x D701 x H 810 mm (H 985 mm with raising base JLS2-BASEMBS).
- **Weight** : 70 kg.

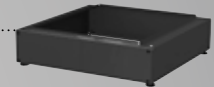
STACKABLE UNITS



KEY POINTS

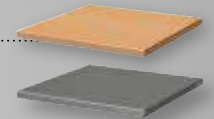
2 DIFFERENT HEIGHTS

Low version 850 mm
High version 1025 mm thanks to raising base.



WORKTOPS

Multi-ply beech 40mm linsed oil.
Wood + brushed stainless steel.



FINISHING STAGE

New jacks with ball joint
for an optimal adjustment.



SINGLE GLAZED DOORS

REF. JLS2-MBSPV



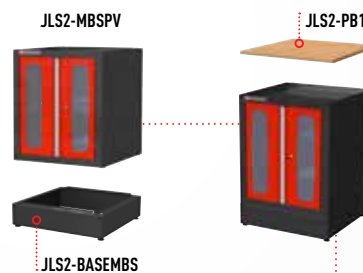
- Transparent doors allow to quickly check contents and cleanless.
- 2 transparent swinging doors in plexiglas, thickness 3mm, mounted on invisible pin hinges offering a 110-degree opening. The doors are tested for 10,000 opening/closing cycles.
- 1 epoxy painted shelf adjustable in height (100 mm steps) withstanding 50 kg loads.
- Unit fitted with jack feet for an adjustment ensuring perfect stability regardless of the type of floor.
- Keylock, supplied with 2 keys, including 1 jointed. Interchangeable lock.
- **Overall dimensions** : L722 x D701 x H810 mm (H 985 mm with the raising base JLS2-BASEMBS).
- **Weight** : 55,7 kg.

RAISING BASE

REF. JLS2-BASEMBS



- To increase the height from 850 to 1025 mm (including 40 mm worktop).
- Epoxy painted sheet steel (thickness 12/10th). Has to be fitted with the 4 pivoting jacks delivered with the base unit for a perfect finishing.
- **Dimensions** : L720 x D699 x H80 mm - **Weight** : 15,5 kg.



KEY POINTS

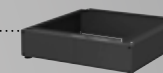
CLOSING SYSTEM

"ONE KEY" option under request - Interchangeable locks.



2 DIFFERENT HEIGHTS

Low version **850 mm**
High version **1025 mm** thanks to raising base.



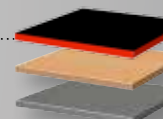
ACCESSORIES

Sides of the units can receive JETXL lateral accessories (See range of accessories in the F13 catalogue).



WORKTOPS

Multi-ply beech 40 mm linsed oil.
Wood + brushed stainless steel.
Metal + rubber mat.



FINISHING STAGE

New jacks with ball joint for an optimal adjustment.



QUALITY

Doors are tested over **10,000 open/close cycles**.

SINGLE FULL DOORS

REF. JLS2-MBSPP



- 2 swinging doors, thickness 3mm, mounted on invisible pin hinges offering a 110-degree opening. The doors are tested for 10,000 opening/closing cycles.
- 1 epoxy painted shelf adjustable in height (100 mm steps) withstanding 50 kg loads.
- Unit fitted with jack feet for an adjustment ensuring perfect stability regardless of the type of floor.
- Keylock, supplied with 2 keys, including 1 jointed. Interchangeable lock
- **Overall dimensions :**
L722 x D701 x H810 mm
(H 985 mm with the raising base JLS2-BASEMBS)
- **Weight :** 57,5 kg.

DOUBLE FULL DOORS

REF. JLS2-MBDPP



- The double unit can be used for storing tools and/or items which are too long and bulky for standard units.
- With minimal door volumes, the sliding opening is perfect for small spaces.
- 2 metal sliding panels.
- 1 epoxy painted shelf adjustable in height (100 mm steps) withstanding 75 kg loads.
- Unit fitted with jack feet for an adjustment ensuring perfect stability regardless of the type of floor.
- Keylock, supplied with 2 keys, including 1 jointed. Interchangeable lock.
- **Overall dimensions :**
L1449 x D701 x H810mm.
(H985 mm with the raising base JLS2-BASEMBD)
- **Weight :** 84,7 kg.

RAISING BASE

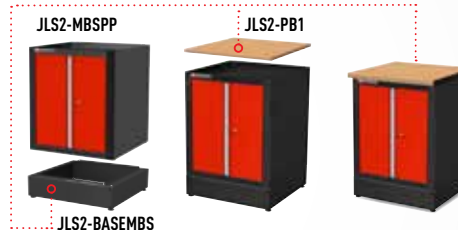
- To increase the height from 850 to 1025 mm (including 40 mm worktop).
- Epoxy painted sheet steel (thickness 12/10th). Has to be fitted with the 4 pivoting jacks delivered with the base unit for a perfect finishing.

SINGLE UNIT

REF. JLS2-BASEMBS



- **Dimensions :**
L720 x D699 X H80 mm
- **Weight :** 15,5 kg



DOUBLE UNIT

REF. JLS2-BASEMBD



- **Dimensions :**
L1447 x D699 x H 180 mm
- **Weight :** 19 kg

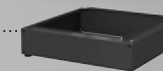


KEY POINTS

CLOSING SYSTEM
'ONE KEY' option under request -
Interchangeable locks.



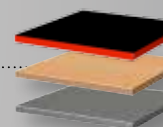
2 DIFFERENT HEIGHTS
Low version **850 mm**
High version **1025 mm** thanks to
raising base.



ACCESSORIES
Sides of the units can receive JETXL lateral
accessories (See range of accessories in the F13
catalogue).



WORKTOPS
Multi-ply beech 40 mm linsed oil.
Wood + brushed stainless steel.
Metal + rubber mat.



FINISHING STAGE
New jacks with ball joint
for an optimal adjustment.



QUALITY
Doors are tested over **10,000 open/close cycles**.

DOUBLE WITH SHUTTER REF. JLS2-MHDR



- The double unit can be used for storing tools and/or items which are too long and bulky for standard units.
- Maximum visibility and accessibility thanks to vertical hooking part.
- Shutters opening fully offers a direct tool access.
- Shutter, key-lock closing (Interchangeable lock).
- Fitted with a perforated panel (6 x 6 mm au pas de 12 mm) for a fixing of tools using the CKS range of hooks (see catalogue F08).
- Easy and direct fixing on the worktop or to the wall. No fitting kits to use.
- **Overall dimensions** : L1455 x D278 x H810 mm.
- **Hook fastening useful dimensions** : L1330 x D183 x H714 mm.
- **Weight** : 24,2 kg.

TRIPLE WITH SHUTTER REF. JLS2-MHTR



- The double unit can be used for storing tools and/or items which are too long and bulky for standard units.
- Maximum visibility and accessibility thanks to vertical hooking part.
- Shutters opening fully offers a direct tool access.
- Shutter, key-lock closing (Interchangeable lock).
- Fitted with a perforated panel (6*6mm au pas de 12 mm) for a fixing of tools using the CKS range of hooks (see catalogue F08).
- Easy and direct fixing on the worktop or to the wall. No fitting kits to use.
- **Overall dimensions** : L2182 x D278 x H810 mm.
- **Hook fastening useful dimensions** : L2057 x D183 x H714mm.
- **Weight** : 32,7 kg.

SINGLE FULL DOORS

REF. JLS2-MHSPP



- 2 swinging doors, mounted on invisible pin hinges offering a 110-degree opening. The doors are tested for 10,000 opening/closing cycles.
- 2 epoxy painted shelf adjustable in height (100 mm steps) withstanding 20 kg loads.
- Keylock, supplied with 2 keys, including 1 jointed.
- Easy and fast fastening on a low unit thanks to the "KIT-TUBES" or "KIT-TUBESUP" fitting kit.
- **Overall dimensions** : L719 x D278 x H810 mm.
- **Weight** : 27,5 kg.

SINGLE GLAZED DOORS

REF. JLS2-MHSPV



- Transparent doors allow you to quickly check contents and cleanliness.
- 2 transparent swinging doors in plexiglass, thickness 3 mm, mounted on invisible pin hinges offering a 110-degree opening.
- The doors are tested for 10,000 opening/closing cycles.
- 2 epoxy painted shelf adjustable in height (100 mm steps) withstanding 20 kg loads.
- Keylock, supplied with 2 keys, including 1 jointed. Interchangeable lock.
- Easy and fast fastening on a base unit using a "JLS2-TUBESUP 400" fitting kit.
- **Overall dimensions** : L719 x D278 x H810 mm.
- **Weight** : 26 kg.

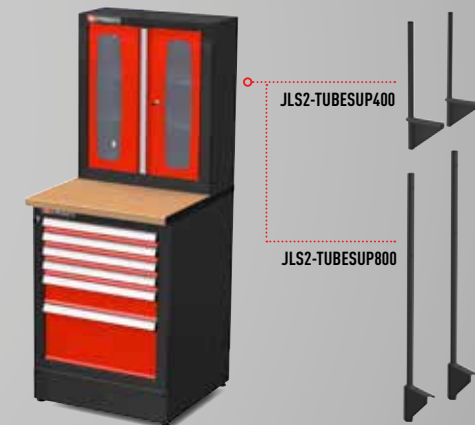
KEY POINTS

DOORS

- Epoxy painted sheet steel (thickness 12/10th).
- Transparent doors allow you to quickly check contents and cleanliness.
- These cabinets are ideally suited for application of the 5S rule : SEIRI (clear away), SEITON (store), SEISO (clean), SEIKETSU (specify storage rules), SHITSUKE (ensure compliance).

ASSEMBLY

- Quickly and easily fitted to a base unit using a JLS2-TUBESUP400 fitting kit.
(JLS2-TUBESUP800 can also be used).



QUALITY

- Doors are tested over 10,000 open/close cycles.

SINGLE FULL DOORS AND 1 DRAWER

REF. JLS2-2201



- Cabinet with vertical hanging and drawer sections.
- **Vertical fastening part :**
Storage surface area: 1 m².
The base and sides of the cabinet, door liners, are perforated for hanging tools using the CKS system.
- Opening at 180° of the 2 swinging doors for maximum visibility and accessibility.
- Drawer section : 1 drawer with heavy-duty ball-bearing slides, 100% opening.
Drawer useful dimensions :
L.569 x H.60 x D.210 mm.
- Centralised locking of the doors and drawer by keylock.
- Easy and fast fastening on a base unit using a "JLS2-TUBESUP 400" fitting Kit..
- **Overall dimensions :**
L719 x D278 x H810 mm.
- **Weight :** 31 kg.

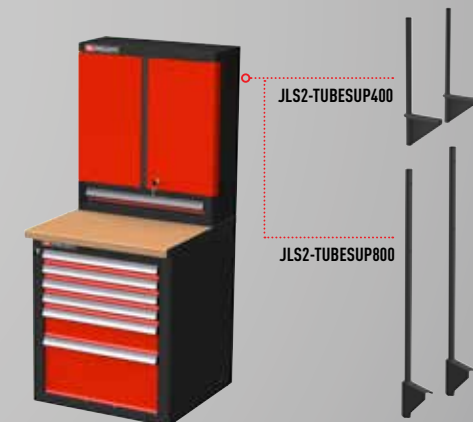
KEY POINTS

DOORS

- Epoxy painted sheet steel (thickness 12/10th).
- Transparent doors allow you to quickly check contents and cleanliness.
- These cabinets are ideally suited for application of the 5S rule : SEIRI (clear away), SEITON (store), SEISO (clean), SEIKETSU (specify storage rules), SHITSUKE (ensure compliance).

ASSEMBLY

- Quickly and easily fitted to a base unit using a JLS2-TUBESUP400 fitting kit.
(JLS2-TUBESUP800 can also be used).



QUALITY

- Doors are tested over 10,000 open/close cycles.

POWER UNIT CABINET

REF. JLS2-MBSEN



Upper part :

- Electrical duplex outlet allowing customers to install 3 sockets 45mm (Supplied without sockets) (including black covers).
- 1 drawer height 200 mm, fitted with a SCHUKO outlet (6 sockets) to recharge tools, lighting, mobile phone, laptop, etc

Lower part :

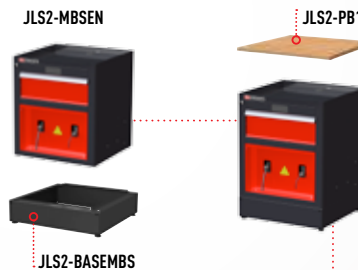
- Two 14 meters cable reels for compressed air and power supply roller guides for smooth cables extension and extraction.
- Quick release concealment panel to enclose and conceal the reels. Easy access to the reels.
- Cable management keeps everything tidy and meets the highest requirements.
- Centralized locking, jointed keylock. Interchangeable lock.
- Fitted with 4 pivoting jacks for a perfect finishing.
- **Overall Dimensions** : L722 x D701 x H810 mm (H 985 mm with the raising base JLS2-BASEMBS)
- **Weight** : 69,6 kg.

SINGLE UNIT

REF. JLS2-BASEMBS



- To increase the height from 850 to 1025 mm (including 40 mm worktop)
- Epoxy painted sheet steel (thickness 12/10th). Has to be fitted with the 4 pivoting jacks delivered with the base unit for a perfect finishing.
- **Dimensions** : L720 x D699 x H80 mm - **Weight** : 15,5 kg



KEY POINT

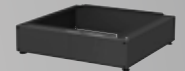
CLOSING SYSTEM

"ONE KEY" option under request - Interchangeable locks.



2 DIFFERENT HEIGHTS

Low version 850 mm
High version 1025 mm thanks to raising base.



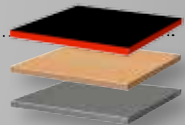
ACCESSORIES

Sides of the units can receive JETXL lateral accessories (See range of accessories in the F13 catalogue).



WORKTOPS

Multi-ply beech 40 mm lined oil.
Wood + brushed stainless steel.
Metal + rubber mat.



FINISHING STAGE

New jacks with ball joint for an optimal adjustment.



COMPUTER STATION

REF. JLS2-MBSPC

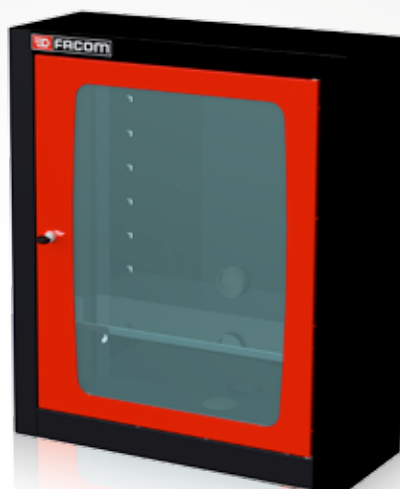


Computer cabinets protect electronic equipment in dusty and dirty surroundings.
Base unit for laptop, printer, keyboard, mouse.

- Lockable 60 mm keyboard or laptop drawer with full extension.
- Pull-out mouse shelf (can be positioned on right or left side).
- 2 swing-out doors.
- 1 adjustable pull-out shelf to receive a computer unit or printer.
- 1 power supply, consisting of a 6 SCHUKO sockets outlet with illuminated switch.
- Centralized locking system.
- **Can be completed with the upper part JLS2-MHSPC**
- **Use only metal worktops which are dedicated to this station** (integrated holes for cables).
- Fitted with 4 jack feet for an adjustment ensuring perfect stability regardless of the type of floor.
- **Overall Dimensions** : L722 x D701 x H810 mm.
(H985 mm with raising base JLS2-BASEMBS).
- **Weight** : 57,7 kg.

COMPUTER STATION

REF. JLS2-MHSPC



Top unit dedicated to the protection of your monitor.

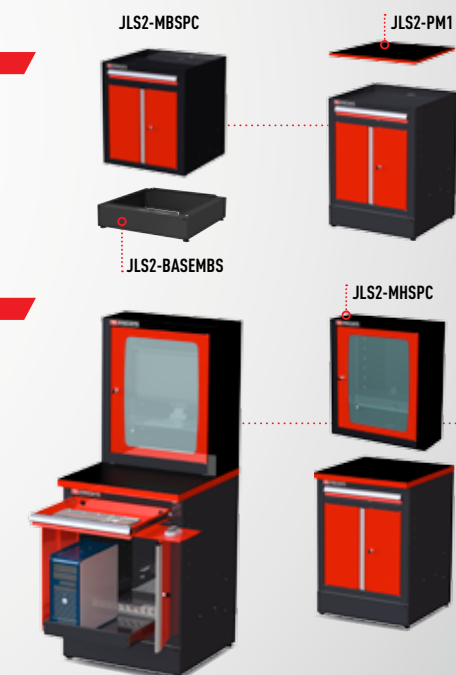
- 1 swinging door with viewing window made of 3 mm plexiglas for 23 inches flat-screen monitor.
- 1 adjustable shelf - epoxy painted.
- Can be installed on base unit JLS2-MBSPC to create a full computer station. In this case use only the metal worktop (JLS2-PM1).
- Easy and fast fastening on a base unit using a "JLS2-TUBESUP 400" fitting kit.
- **Overall Dimensions** : L719 x D278 x H810 mm.
- **Weight** : 22,7 kg.

SINGLE UNIT

REF. JLS2-BASEMBS



- To increase the height from 850 to 1025 mm (including 40 mm worktop).
- Epoxy painted sheet steel (thickness 12/10th).
Has to be fitted with the 4 pivoting jacks delivered with the base unit for a perfect finishing.
- **Dimensions** : L720 x D699 x H80 mm - **Weight** : 15,5 kg



SINGLE OPEN CHEST

REF. JLS2-CHS



- Open box for quick access. Ideal for storage of documents and/or consumables.
- Acceptable load 30 kg.
- Keylock.
- Easy and fast fastening on a base unit thanks to the JLS2- TUBESUP (800 ou 400) fitting kit.
- **Overall dimensions** : L719 x D278 x H405 mm.
- **Weight** : 8,5 kg.

DOUBLE OPEN CHEST

REF. JLS2-CHD



- Open box for quick access. Ideal for storage of documents and/or consumables.
- Acceptable load 50 kg.
- Keylock.
- Easy and fast fastening on a base unit thanks to the JLS2- TUBESUP (800 ou 400) fitting kit.
- **Overall dimensions** : L1446 x D278 x H405 mm.
- **Weight** : 14 kg.

KEY POINTS

DOORS

- Epoxy painted sheet steel (thickness 12/10th).
- Transparent doors allow you to quickly check contents and cleanliness.
- These cabinets are ideally suited for application of the 5S rule : SEIRI (clear away), SEITON (store), SEISO (clean), SEIKETSU (specify storage rules), SHITSUKE (ensure compliance).

ASSEMBLY

- Quickly and easily fitted to a base unit using a JLS2-TUBESUP800.



QUALITY

- Doors are tested over 10,000 open/close cycles.

SINGLE FULL DOOR CHEST

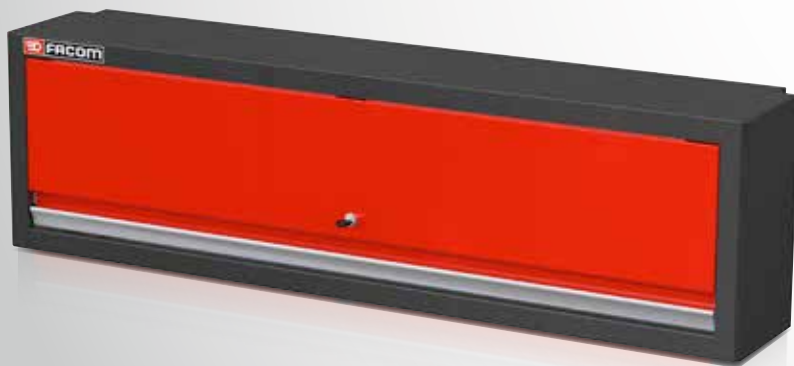
REF. JLS2-CHSPP



- Ideal for storage of documents and/or consumables.
- Metal sheet lift door fitted with gas struts tested for 10,000 opening/closing cycles.
- Acceptable load 30 kg.
- Centralized locking, jointed keylock. Interchangeable lock.
- Easy and fast fastening on a base unit thanks to the JLS2- TUBESUP (800 or 400) fitting kit.
- **Overall dimensions** : L719 x D278 x H405 mm.
- **Weight** : 13.5 kg.

DOUBLE FULL DOOR CHEST

REF. JLS2-CHDPP



- Ideal for storage of documents and/or consumables.
- Metal sheet lift door fitted with gas struts tested for 10,000 opening/closing cycles.
- Acceptable load 50 kg.
- Centralized locking, jointed keylock. Interchangeable lock
- Easy and fast fastening on a base unit thanks to the JLS2- TUBESUP (800 or 400) fitting kit.
- **Overall dimensions** : L1446 x D278 x H405 mm.
- **Weight** : 19 kg.

KEY POINTS

DOORS

- Metal sheet lift door fitted with gas strut.
- Closing : "ONE KEY" option - Interchangeable locks.

MONTAGE

- Fixation rapide et simple sur un élément bas grâce au kit de montage JLS2-TUBESUP800.



QUALITY

- Doors are tested over 10,000 open/close cycles.

ONE FULL DOOR

REF. JLS2-A500PP



- Low width for restricted spaces.
- For use as standard cabinet or as clothes locker.
- 1 swinging door, mounted on invisible pin hinges offering a 110-degree opening. The doors are tested for 10,000 opening/closing cycles.
- 3 epoxy painted shelves adjustable in height (100mm steps) withstanding 35 kg loads.
- 1 wardrobe bar for use as locker.
- Keylock, 2 points top and bottom.
- **Overall dimensions :** L500 x D509 x H1835 mm (feet 169 mm).
- **Weight :** 70 kg.

2 FULL DOORS

REF. JLS2-A1000PP



- An indispensable cabinet for organized and effective storage of all tools and consumables.
- Swinging doors mounted on invisible pin hinges offering a 110-degree opening.
- The doors are tested for 10,000 opening/closing cycles.
- 3 epoxy painted shelves adjustable in height (100 mm steps) withstanding 75 kg loads.
- Keylock, 2 points top and bottom.
- **Overall dimensions :** L1000 x D509 x H1835 mm (feet 169 mm).
- **Weight :** 102 kg.

2 GLAZED DOORS

REF. JLS2-A1000PV



- Transparent doors allow you to quickly check contents and cleanliness.
- 2 transparent swinging doors in Plexiglas, thickness 3 mm, mounted on invisible pin hinges offering a 110-degree opening.
- The doors are tested for 10,000 opening/closing cycles.
- 3 epoxy painted shelves adjustable in height (100 mm steps) withstanding 75 kg loads.
- Keylock, 2 points top and bottom.
- **Overall dimensions :** L500 x D509 x H1835 mm (feet 169 mm).
- **Weight :** 95 kg.

Gain space : wall surfaces are transformed into storage surfaces.

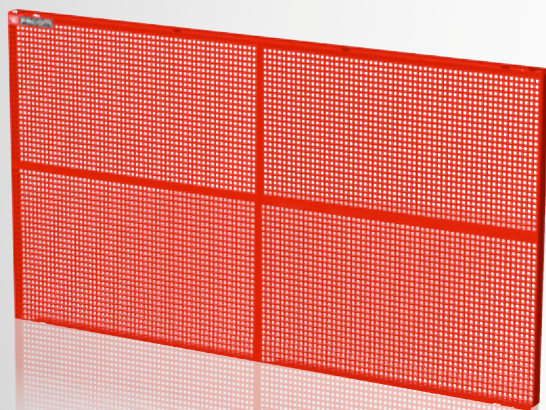
Gain time : direct access to tools.

- Perforated panel: 6 x 6 mm in steps of 12 mm.
- Fixing of tools using the CKS range of hooks (see catalogue F13).
Stacking of 2 half-panels possible.
- Made of Epoxy painted sheet steel (thickness 12/10ths). Colour red 3020.



PANELS (800 MM)

REF. JLS2-PAV1
REF. JLS2-PAV2

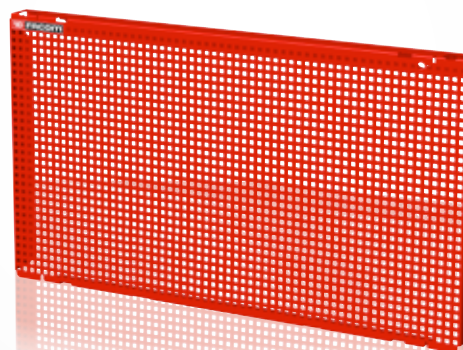


• Overall dimensions :

	L [mm]	H [mm]	Thickness	Weight [kg]
JLS2-PAV1	724,5	805	45	5,6
JLS2-PAV2	1452	805	45	10,6

HALF PANELS (400 MM)

REF. JLS2-PPAV1
REF. JLS2-PPAV2



• Overall dimensions :

	L [mm]	H [mm]	Thickness	Weight [kg]
JLS2-PPAV1	724,5	402,5	45	3,1
JLS2-PPAV2	1452	402,5	45	6,2

KEY POINTS

FITTING TIPS

If you select a H800mm panel or if you want to stack on 2 components (2 panels or 1 panel + 1 chest for example), use KIT-TUBESUP800.

If you only select half-panels H400 mm, use KIT-TUBESUP400.



Gain space : wall surfaces are transformed into storage surfaces.

Gain time : direct access to tools.

- Perforated panel: 6 x 6 mm in steps of 12 mm.
- Fixing of tools using the CKS range of hooks (see catalogue F13).
Stacking of 2 half-panels possible.
- Made of Epoxy painted sheet steel (thickness 12/10ths). Colour red 3020.



HALF PANELS (400 MM)

REF. JLS2-PPAV1ELEC



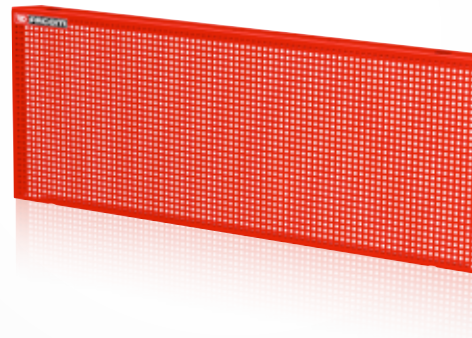
- Fitted with a block of 6 SCHUKO sockets with on-off switch.

Overall dimensions :

	L [mm]	H [mm]	Thickness	Weight [kg]
JLS2-PPAV1ELEC	724,5	402,5	45	4,1

CORNER HALF PANELS (400MM)

REF. JLS2-PPAVA



- Stacking of 2 half-panels possible.

Overall dimensions :

	L [mm]	H [mm]	Thickness	Weight [kg]
JLS2-PPAVA	1036	402,5	45	4,4

LES + PRODUITS

FITTING TIPS

If you select a H800mm panel or if you want to stack on 2 components (2 panels or 1 panel + 1 chest for example), use KIT-TUBESUP800.

If you only select half-panels H400 mm, use KIT-TUBESUP400.



- Wooden panel made of multi-ply beech.
- Thickness 40 mm for strength and durability.
- Linseed oil treatment for improved resistance to liquids and easy maintenance.
- Fast and easy assembly thanks to pre-drilled metallic inserts positions.

WOODEN WORKTOP

REF. JLS2-PB1 / REF. JLS2-PB2 / REF. JLS2-PB3



- **Load resistance** : 500 kg pour JLS2-PB1,
1 Tonne pour JLS2-PB2 et JLS2-PB3
- **Overall dimensions** :

	L [mm]	P [mm]	Thickness	Weight [kg]
JLS2-PB1	727	750	40	17,9
JLS2-PB2	1455	750	40	35,2
JLS2-PB3	2182	750	40	52,7

CORNER WORKTOP

REF. JLS2-PBA



- **Load resistance** : 100 kg.
- **Overall dimensions** :

	L [mm]	P [mm]	Thickness	Weight [kg]
JLS2-PBA	750	750	40	8,6



KEY POINTS

PERFECT FINISHING

- New adjustment system ensuring joint and flatness between the plates.



- Finishing epoxy painted metal cover.



SO SIMPLE TO INSTALL

- Worktops are perforated to receive the fitting kits. If you don't have top units, you can let the plastic plugs in place.
- Metallic insert locations are perforated yet. You just have to put them on the right place (depending on the chosen unit).

- Panel made of multi-ply beech of thickness 40 mm covered with 10/10th 304L brushed stainless steel for improved impact and heat resistance (edge also covered - painted metal cover for the sides). Sides will be protected by a finishing painted metal sheet.
- Fast and easy assembly thanks to pre-drilled metallic inserts positions.
- Capable of supporting loads: 500 kg.

WOODEN WORKTOP

REF. JLS2-PBST1/ REF. JLS2-PBST2 / REF. JLS2-PBST3



- **Load resistance** : 500 kg pour JLS2-PBST1,
1 Tonne pour JLS2-PBST2 et JLS2-PBST3
- **Overall dimensions** :

	L [mm]	P [mm]	Thickness	Weight [kg]
JLS2-PBST1	727	805	40	22,6
JLS2-PBST2	1455	750	40	44,5
JLS2-PBST3	2182	750	40	66,6

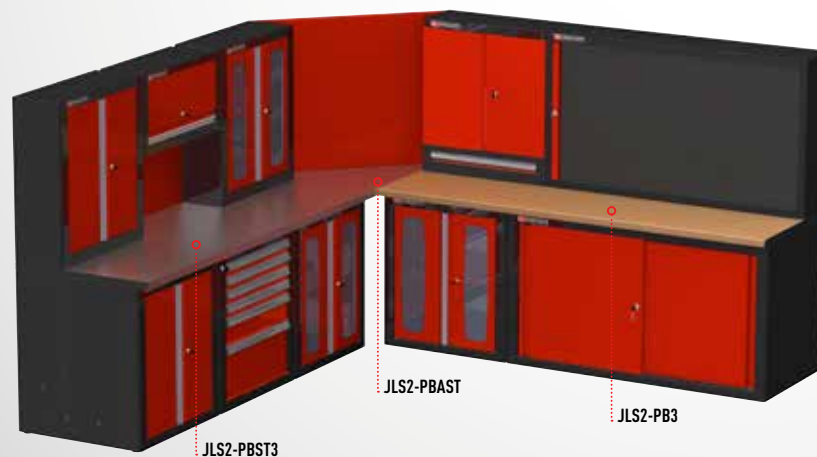
CORNER WORKTOP

REF. JLS2-PBAST



- **Load resistance** : 100 kg,
- **Overall dimensions** :

	L [mm]	P [mm]	Thickness	Weight [kg]
JLS2-PBAST	750	750	40	10,6



KEY POINTS

PERFECT FINISHING

- New adjustment system ensuring joint and flatness between the plates.



- Finishing epoxy painted metal cover.



SO SIMPLE TO INSTALL

- Worktops are perforated to receive the fitting kits. If you don't have top units, you can let the plastic plugs in place.
- Metallic insert locations are perforated yet. You just have to put them on the right place (depending on the choosen unit).

METAL WORKTOP

REF. JLS2-PM1



- Metal panel covered with a non slipping rubber mat.
- Perfect for the computer station, the worktop is integrating dedicated holes for cables.
When you are using the computer unit JLS2-MBSPC alone (lower part), you can install your screen, without threads laying around.
When you combine the base unit JLS2-MBSPC and the monitor cabinet JLS2-MHSPC, the passage of cables is done directly and discreetly.
- Epoxy painted (red RAL 3020).
- Fast and easy assembly.

METAL WORKTOP

REF. JLS2-PM2



- **Load resistance :** 100 kg pour le JLS2-PM1 and 250 kg pour le JLS2-PM2.

• **Overall dimensions :**

	L [mm]	P [mm]	Thickness	Weight [kg]
JLS2-PM1	727	750	40	10
JLS2-PM2	1455	750	40	21

KEY POINTS

SO SIMPLE TO INSTALL

- Worktops are perforated to receive the fitting kits.

FEET 850 MM

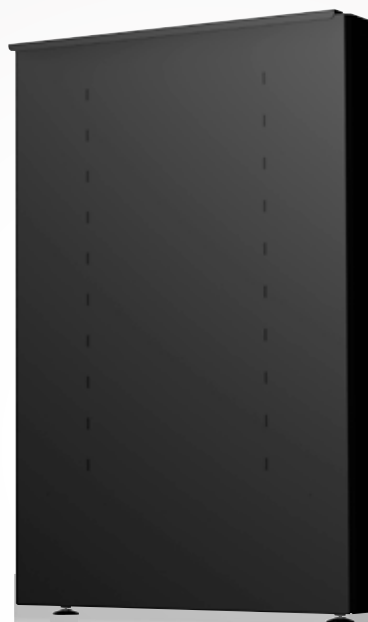
REF. JLS2-PSB



- Foot made of Epoxy painted sheet steel (thickness 12/10ths).
- Equipped with feet with jack for adjustment giving complete stability, irrespective of the type of floor.

FEET 1025 MM

REF. JLS2-PSH



• Overall dimensions :

	L [mm]	P [mm]	H (avec vérin)	Weight [kg]
JLS2-PSB	100	810	40	15,5
JLS2-PSH	100	985	40	19

KEY POINTS

ACCESSORIES

Sides of the units can receive JETXL lateral accessories (See range of accessories in the F13 catalogue).

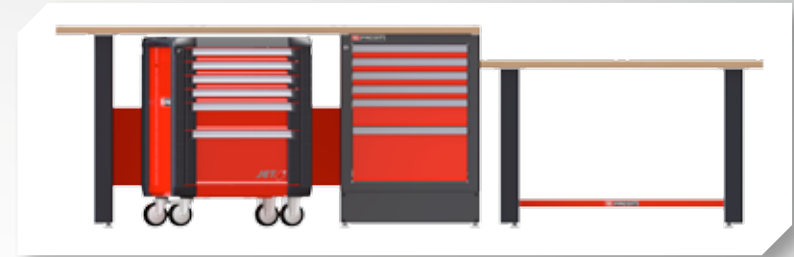


FINISHING STAGE

New jacks with ball joint for an optimal adjustment.



- Multifunctions cross beam : connecting, reinforcement and storage space
- 2 possible positions :
In horizontal position, the cross becomes a real shelf that can receive objects heavy and bulky in
In vertical position, for 1025 height sets, the cross ensures connection between the units and let some space for your roller cabinet
- Made of Epoxy painted sheet steel (thickness 12/10ths). Colour red 3020.



CROSS BEAM 2 FEET

REF. JLS2-TRAA2
REF. JLS2-TRAA3

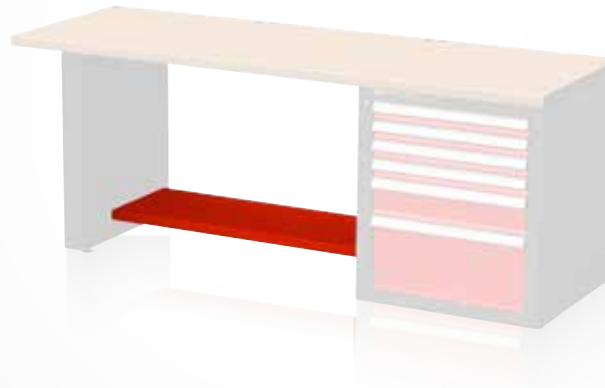


• Overall dimensions :

		L [mm]	H [mm]	Depth	Weight [kg]
Plan de travail de 1455 mm	JLS2-TRAA2	1053	400	40	6,2
Plan de travail de 2182 mm	JLS2-TRAA3	1600	400	40	10,3

CROSS BEAM 1 FEET - 1 BASE

REF. JLS2-TRAB2
REF. JLS2-TRAB3

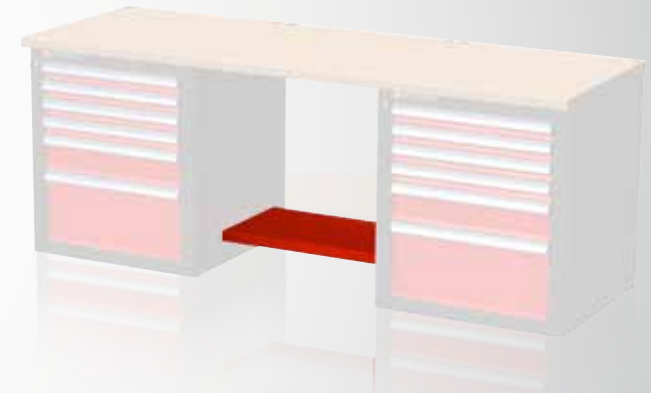


• Overall dimensions :

		L [mm]	H [mm]	Depth	Weight [kg]
Plan de travail de 1455 mm	JLS2-TRAB2	530	400	40	3,3
Plan de travail de 2182 mm	JLS2-TRAB3	1166	400	40	7,4

CROSS BEAM 2 BASE UNITS

REF. JLS2-TRBB3



• Overall dimensions :

		L [mm]	H [mm]	Depth	Weight [kg]
Plan de travail de 2182 mm	JLS2-TRAB3	733	400	40	4,4

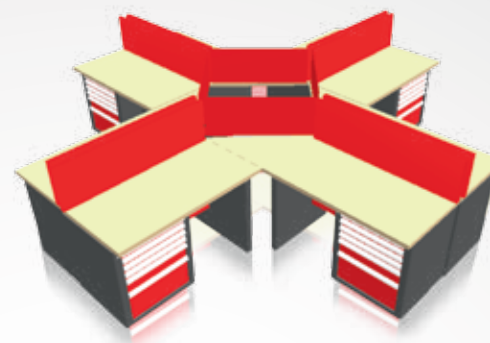
A FACOM innovation : **walls no longer needed !**

Thanks to its exclusive self-supporting structure, the units are fitted independently of the walls.

Fitting is fast and easy : as simple as 1-2-3.

- 1 – Position the base units.
- 2 – Fit the tubes.
- 3 – Install the topt units.

- JLS2-TUBESUP are made of 2 epoxy painted metallic tubes with fitting system under worktop.



KEY POINTS

HOW TO CHOOSE ?

If you select a H800mm panel or if you want to stack on 2 components (2 panels or 1 panel + 1 chest for example , use KIT-TUBESUP800.

If you only select half-panels H400 mm, use KIT-TUBESUP400.

For top units, you should also use KIT-TUBESUP400. Installation would be easier and stability will be ensured.

FITTING KITS (400MM)

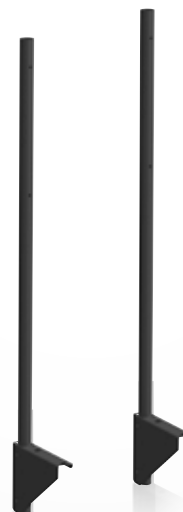
REF. JLS2-TUBESUP400



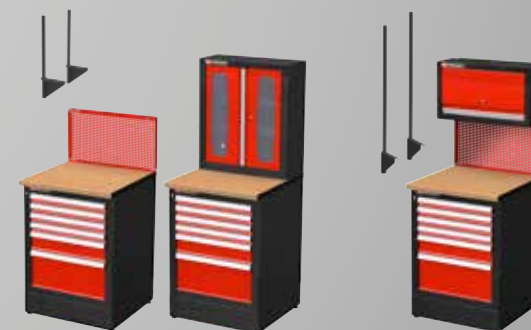
- **Dimensions** : diameter 30 mm / lenght : 585.
- **Weight** : 2 kg.

FITTING KITS (800MM)

REF. JLS2-TUBESUP800



- **Dimensions** : diameter 30 mm / lenght : 990 mm.
- **Weight** : 2,8 kg.



INNOVATION SERVICE :
ONLY ONE KEY FOR ALL YOUR UNITS JETLINE +

JLS2-1KEY



- Interchangeable lock – Easy and fast to install.
- This **option is free if you asked for it when you order your furniture.** Otherwise, you will need to order the barrel in spare part.

KEY POINTS

HOW TO DO IN PRACTICE?

When you order your furniture, you can choose the option **UNIQUE KEY.** It is free!

Examples:

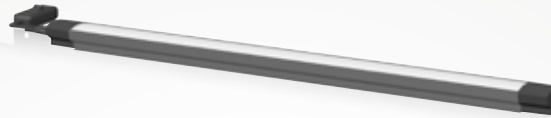
You order 10 storage units and want a single key.

You order 10 times the option JLS2-1KEY.

If you order 2 identical compositions of 10 units but for different workshops, you can order 2 * 10 JLS2-1KEY.

JETLINE + LIGHTING

JLS2-LIGHT



- Rampe LED
18w – 1150 LUMEN
- 30,000 hours
 - Natural Light
 - Possible to connect few banks together.
 - **Dimensions :** L. 584 x l. 42 x H. 27 mm.
 - **Weight :** 600 g.

LIGHT JETLINE +

JLS2-LIGHTSUP

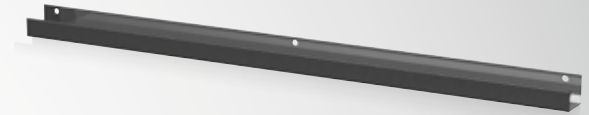


This metal support enables you to fix your lighting directly onto a vertical hooking panel (JLS2-PAV1, PAV2, ...).

- Epoxy painted steel black 9004.
- **Dimensions :** L. 722 x l. 170 x H. 73 mm.
- **Weight :** 2,2 kg.

JETLINE + CABLES CHANNEL

REF. JLS2-TC



Made of galvanized steel. Used to hold cables making them discrete. Easy fitting by screws at the back at the worktop.

- **Dimensions :** L. 727 x l. 40 x H. 35 mm.
- **Weight :** 1 kg.



N E X T I S N O W