



Model 4000E Drum & Disc Brake Lathe



** Brake lathe shown on bench with sign, toolboard and accessories.*

Parts Identification

READ these instructions before placing unit in service. KEEP these and other materials delivered with the unit in a binder near the machine for ease of reference by supervisors and operators.

HENNESSY
INDUSTRIES

1601 J. P. Hennessy Drive, LaVergne, TN USA 37086 615/641-7533 800/688/6359 www.coatsgarage.com
HENNESSY INDUSTRIES INC. Manufacturer of AMMCO®, COATS® and BADA® Automotive Service Equipment and Tools.

Manual Part No.: 95000104 11
Revision: 06/18

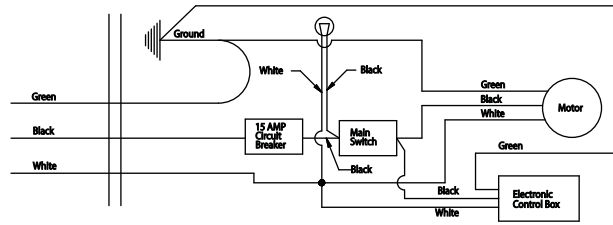
Table of Contents

Parts Identification	2
Electrical Panel Assembly.....	3
Control Box Assembly	4
Control Box 110V Schematic.....	5
Control Box 220V Schematic.....	6
Main Frame Assembly	7
Cross Feed Assembly	8
Cross Feed Drive Assembly	9
Motor and Worm Gear Drive	10
Drum Feed Assembly	11
6950 Twin Cutter	12

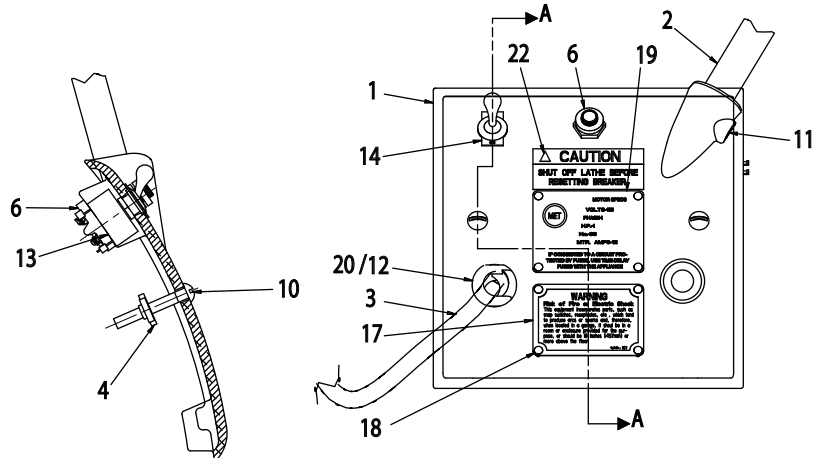
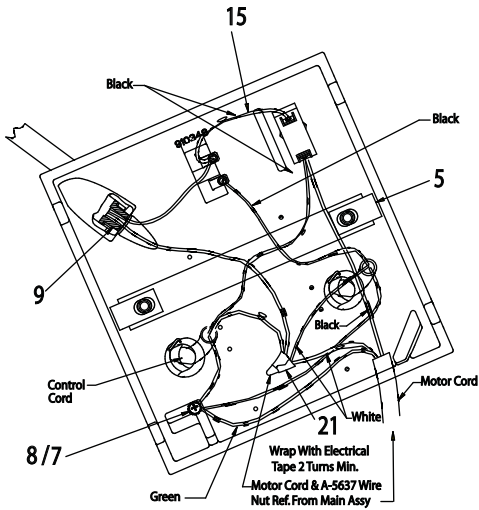
Parts Identification

The following pages include parts breakdowns with exploded view illustrations to help with ordering replacement or spare kits. Assemblies are noted where it is recommended that individual parts not be ordered separately. Note that the parts view illustrations are for multiple models and not all parts shown are on all models. Every effort is made to supply accurate exploded views, however, due to interim changes in manufacturing operations, some units may not be exactly as illustrated.

Electrical Panel Assembly



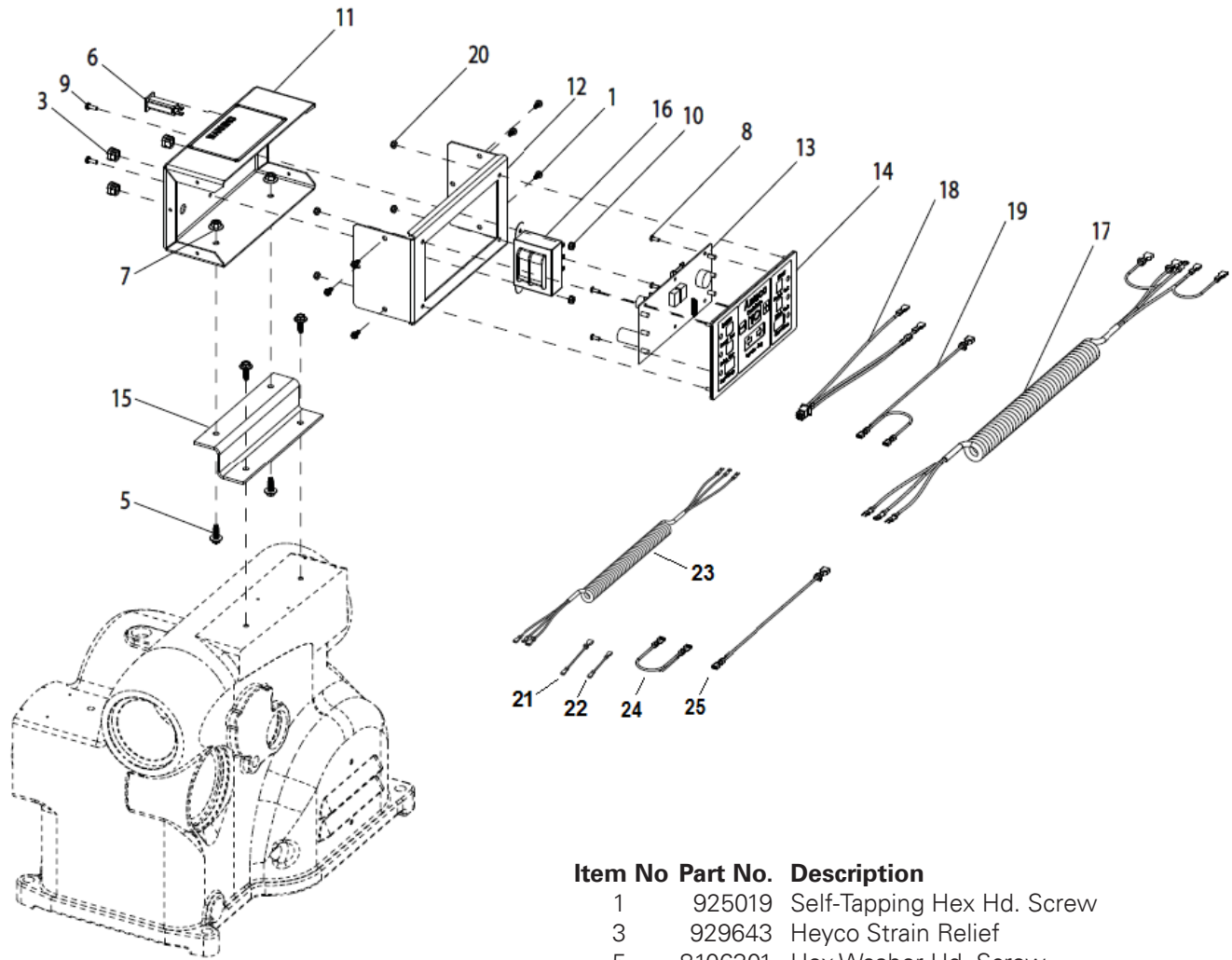
110V
WIRING SCHEMATIC



Item	Part No.	Description
1	95000121	Electrical Panel, 115V-60Hz
	95000131	Electrical Panel, 220V-60Hz
	9500013101	Electrical Panel, 220V-50Hz
2	907963	Lamp Assembly
	929225	Lamp Assembly, 220V
3	907209	Cord Set, 110 V
	907210	Cord Set, 220 V-60Hz
	929507	Cord Set, 220 V-50Hz, Australia
4	940388	Clamp Strap
5	8143813	Tinnerman Nut
6	940868	15 AMP Circuit Breaker
7	921972	Selt-Tapping, #6 Screw
8	901926	Lock Washer
9	906889	Bushing
10	903183	Round Head Machine Screw

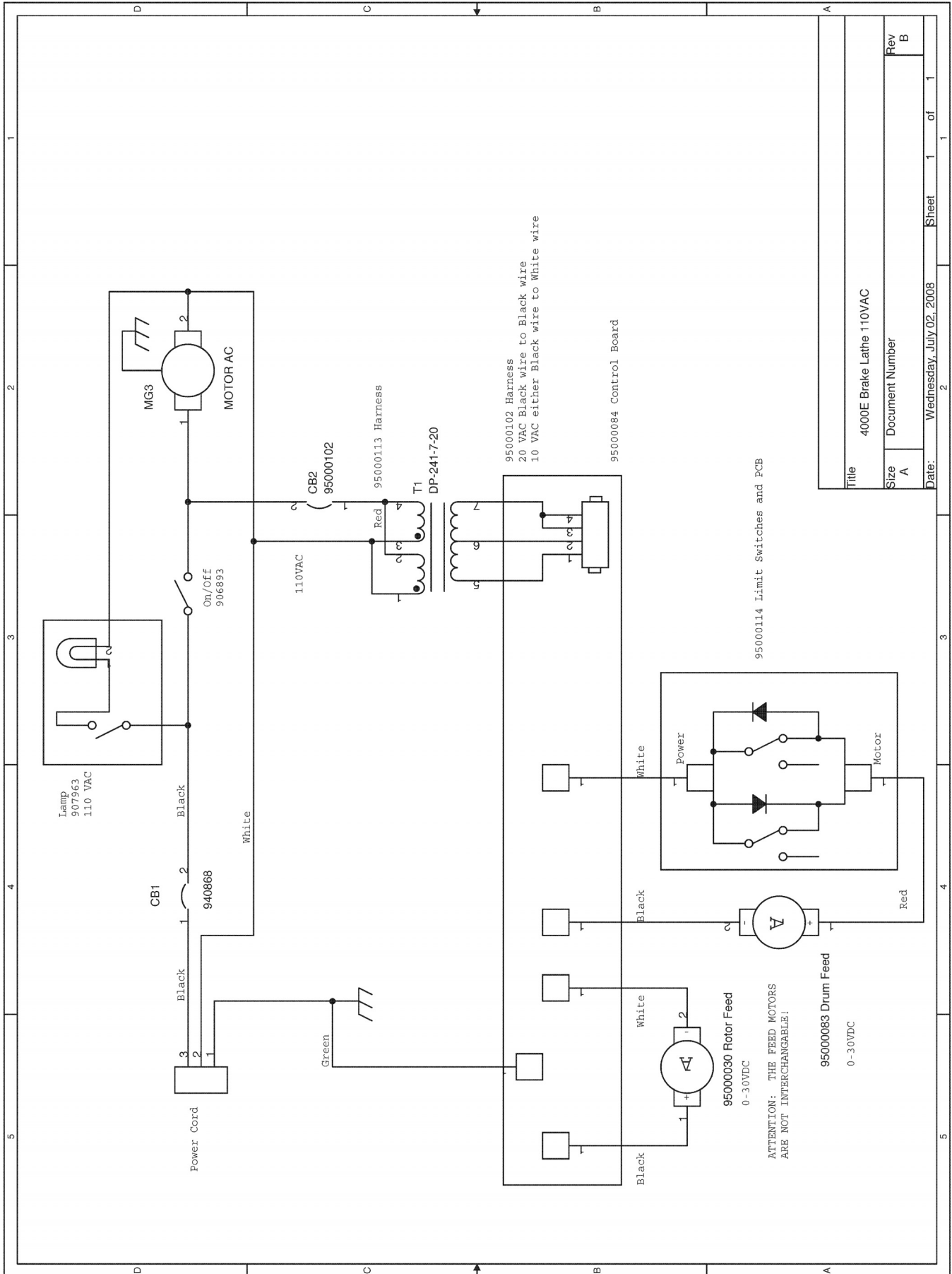
Item	Part No.	Description
11	900220	Set Screw
12	906058	Cord Grip, 110 V
13	906893	Switch, 110 V
	921464	Switch, 220V
14	901185	Switch Plate
15	940988	Black Wire Assembly
17	920463	Electrical Caution Tag
18	900306	Screw, Drive
20	929642	Knock-out Adapter
22	941103	Reset Decal

Control Box Assembly



Item No	Part No.	Description
1	925019	Self-Tapping Hex Hd. Screw
3	929643	Heyco Strain Relief
5	8106301	Hex Washer Hd. Screw
6	8111218	Circuit Breaker, 2 Amp
7	8143169	1/4-20 UNC Whiz Locknut
8	8301067	#6-32 Screw
9	8301082	8-32 x 1/2 Screw
10	8301084	#8-32 Kep Nut
11	95000066	Control Box
12	95000067	Control Cover
13	95000084	Control PCB
14	95000087	Touch Panel Assembly
15	95000092	Mounting Bracket
16	95000093	Transformer
17	95000099	Recoiling Cord Assembly
18	95000102	Wire Harness Assembly
19	95000113	Wire Harness Assembly
20	8111055	#6-32 Lock Nut, w/Nylon Collar
21	95000273	Wire Assembly, Black 5"
22	95000272	Wire Assembly, Black 4"
23	95000274	Recoiling Cord Assembly, 220V
24	95000280	Cable-18 Awg Black,4"
25	95000281	Cable-18 Awg Black,10"

Control Box 110V Schematic



Title 4000E Brake Lathe 110VAC

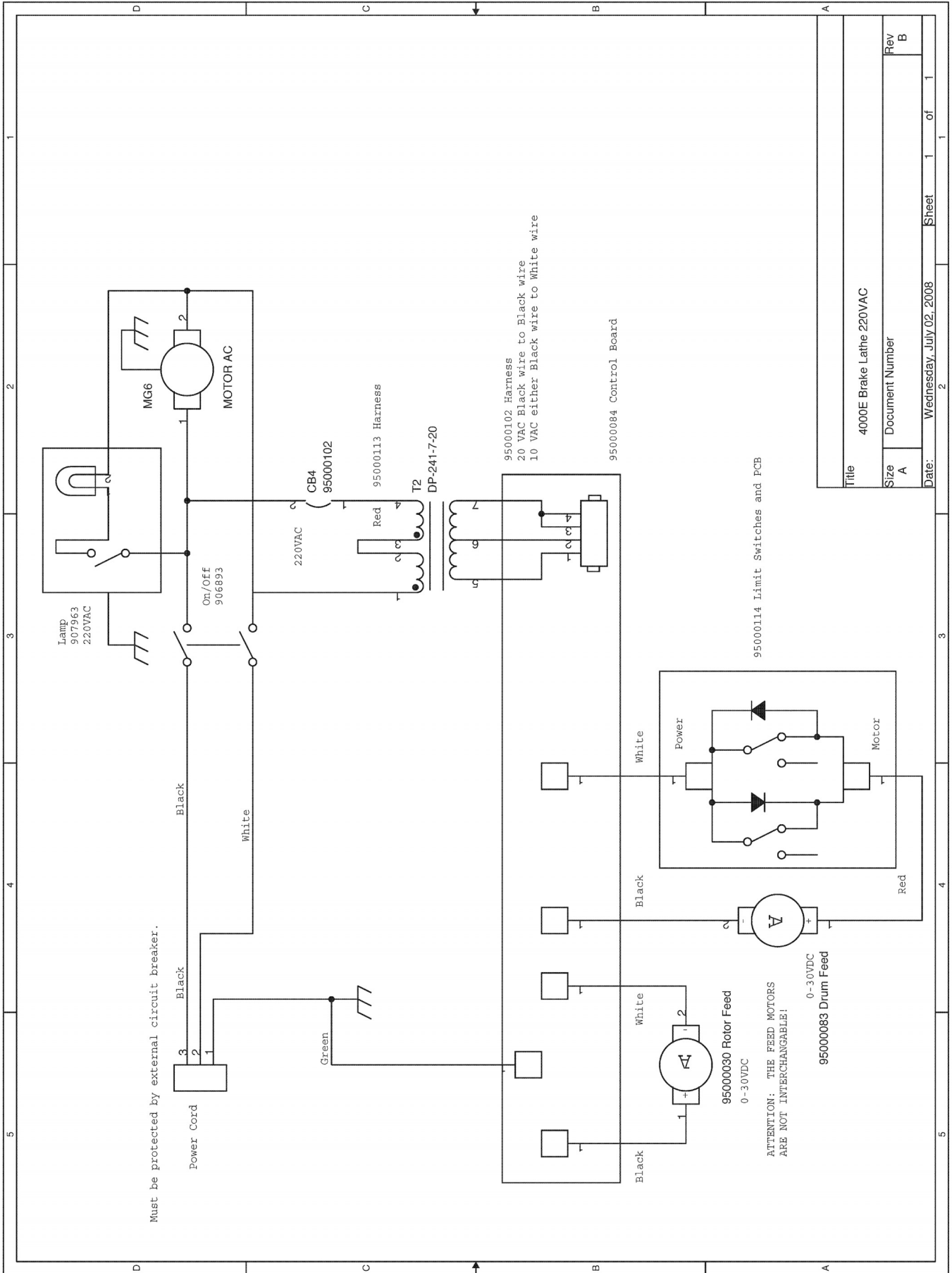
Size A Document Number

Date: Wednesday, July 02, 2008 Sheet 1 of 1

Rev B

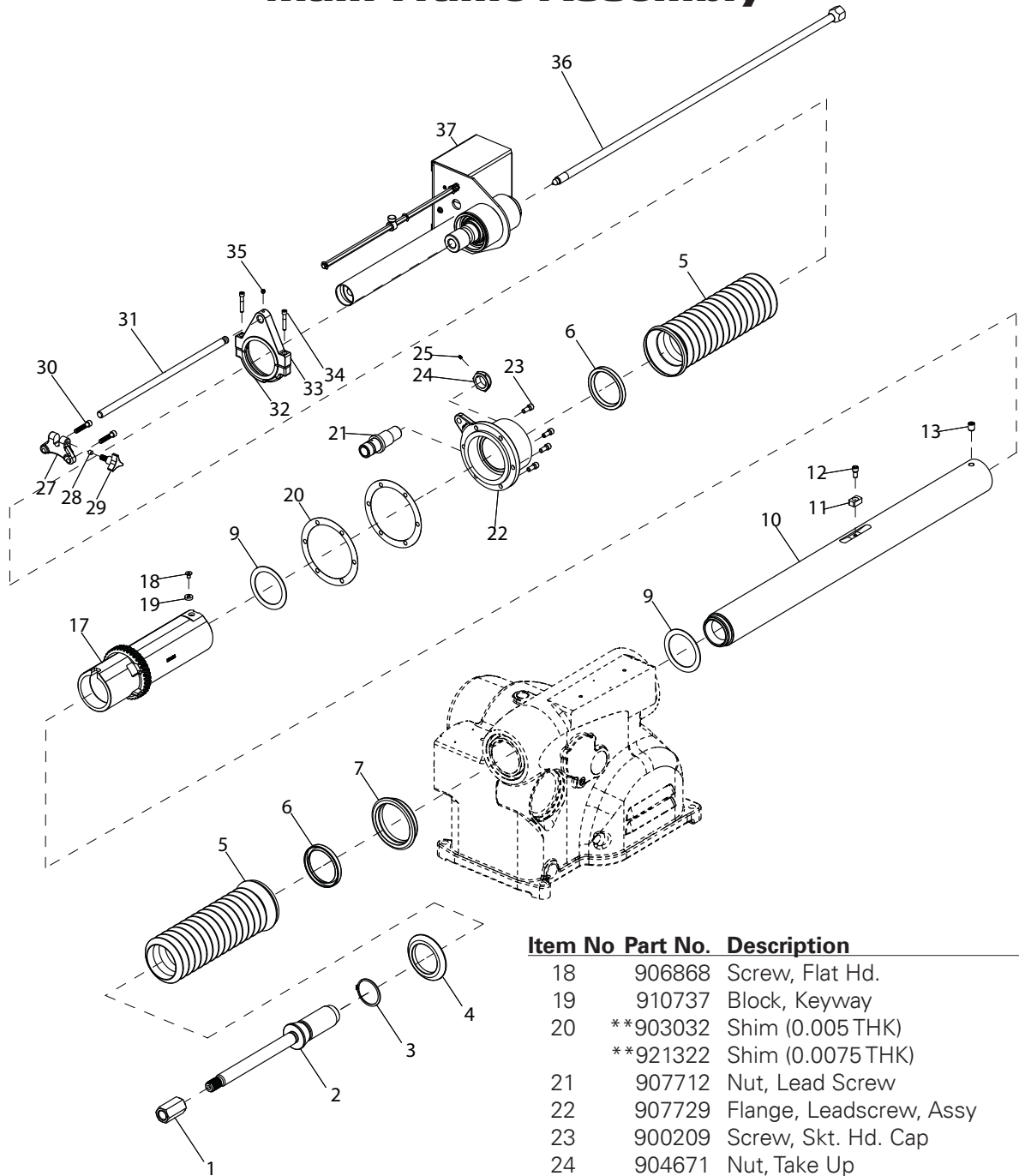
1

Control Box 220V Schematic



Title		4000E Brake Lathe 220VAC
Size	Document Number	Rev
A		B
Date:	Wednesday, July 02, 2008	Sheet 1 of 1

Main Frame Assembly



Item No Part No. Description

1	95000132	Nut, Arbor
2	924363	Arbor, 1"
3	903159	Ring, Retaining
4	923682	Ring, Adapter
5	924725	Boot, Spindle
6	941041	Seal, Oil
7	903089	Ring, Oil Seal Aadpter
9	903033	Washer, Thrust
10	907714	Spindle Body
11	909831	Key, Drive
12	906486	Screw, Socket Head Cap
13	903224	Screw, Cuppoint Set
17	910216	Quill, Drive

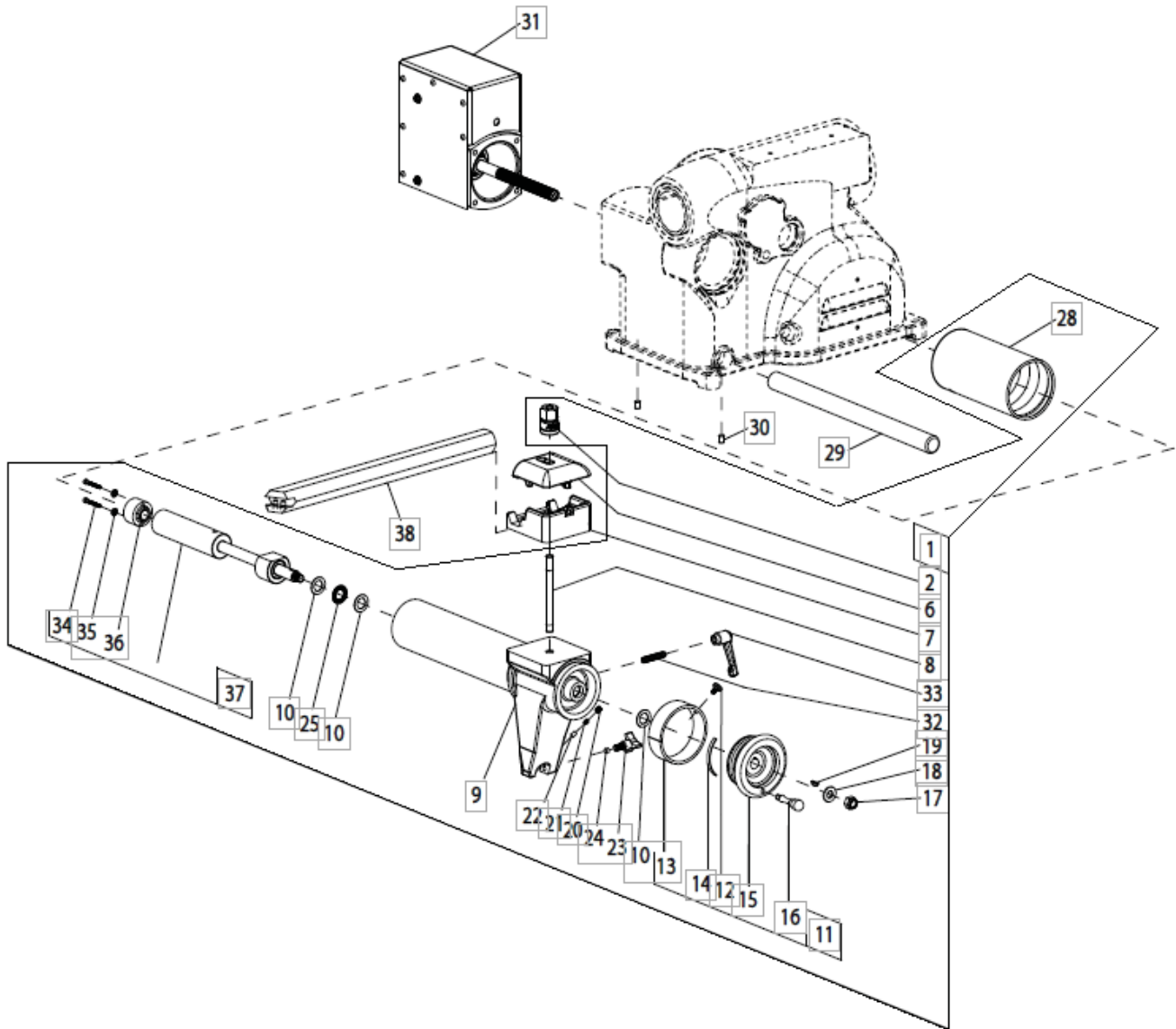
Item No Part No. Description

18	906868	Screw, Flat Hd.
19	910737	Block, Keyway
20	**903032	Shim (0.005THK)
	**921322	Shim (0.0075 THK)
21	907712	Nut, Lead Screw
22	907729	Flange, Leadscrew, Assy
23	900209	Screw, Skt. Hd. Cap
24	904671	Nut, Take Up
25	903338	Screw, Skt. Hd. Set
27	909592	Clamp, Front
28	903142	Plug, Brass
29	906854	Screw, Lock
30	903319	Screw, Skt. Hd. Cap
31	909593	Rod, Lock
32	909998	Clamp, Rear, Lower
33	909999	Clamp, Rear, Upper
34	906825	Screw, Skt. Hd. Cap
35	900213	Screw, Set
36	907716	Drawbar & Nut Assy.
37	*95000028	Drum Feed Assy

*See exploded view, page 9.

**Quantity as Required

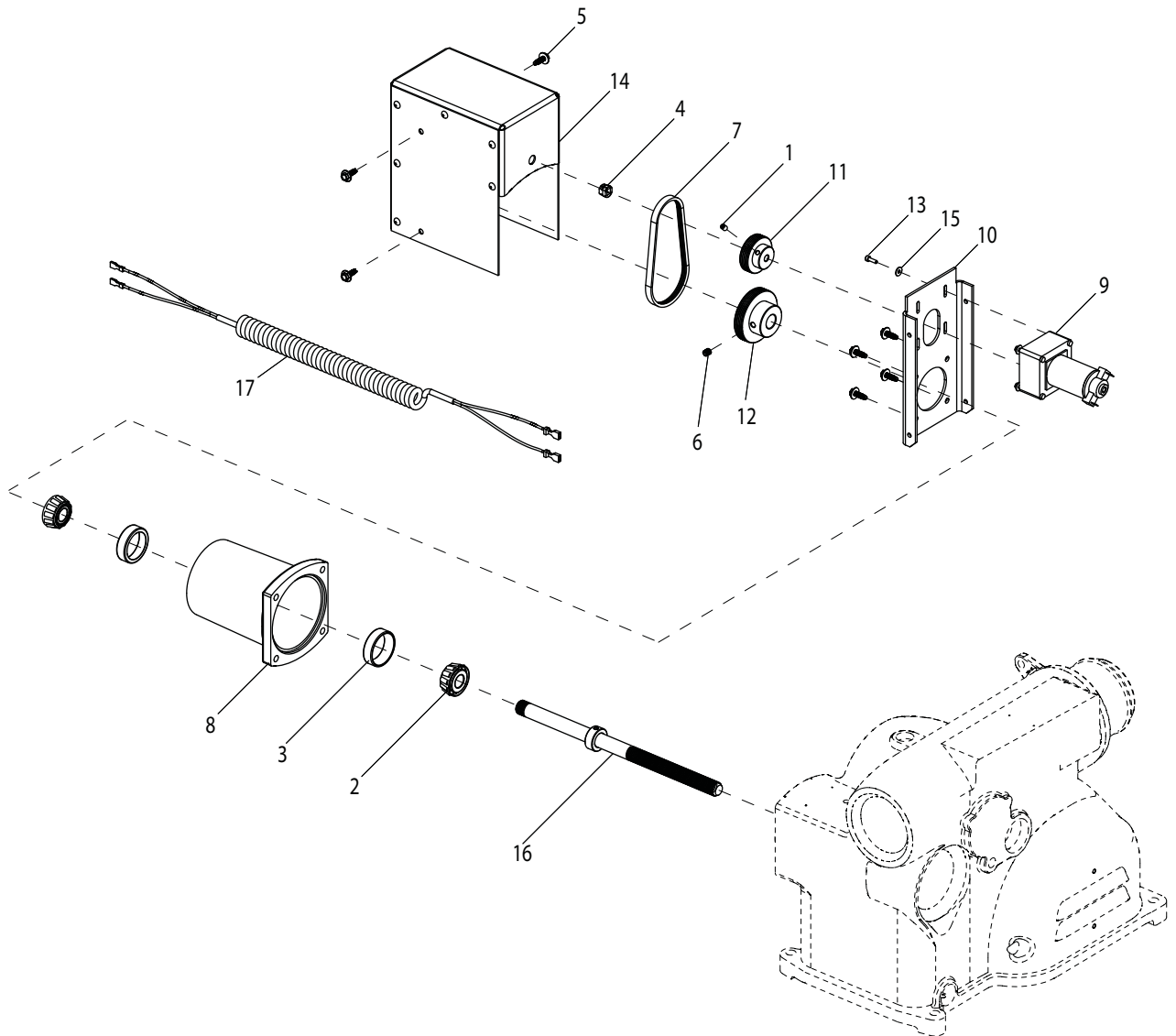
Cross Feed Assembly



Item No	Part No.	Description	Item No	Part No.	Description
1	95000027	Cross Feed Assembly (4000E)	21	902064	Spring
2	911227	Nut/Washer, Hex, Self-Align, Assy.	22	909836	Plug
6	903017	Clamp, Boring Bar, Upper	23	906854	Lock Screw
7	920666	Clamp, Boring Bar, Lower	24	903142	Plug
8	903031	Boring Bar Stud	25	906873	Needle Thrust Bearing
9	909835SUV	Crossfeed	28	903087	Cross Feed Boot Assy w/Spring
10	906874	Race	29	910346	Guide Bar
11	909626	Crossfeed Handwheel Assembly	30	901680	Set Screw
12	906839	Set Screw	31	*95000024	Cross Feed Drive Assembly
13	909634	Dial	32	8180102	Set Screw
14	909611	Dial Spring	33	95000046	Adjustable Lever
15	909633	Handwheel	34	922585	Soc Hd. Cap Screw
16	903026	Handwheel Crank	35	903910	Lock Washer
17	902309	Hex Lock Nut	36	928366	Lead Screw Nut
18	903214	1/2" Flat Washer	37	95000073	Feed Nut Shaft Assembly
19	903176	Woodruff Key	38	905481	Boring Bar
20	900220	Set Screw			

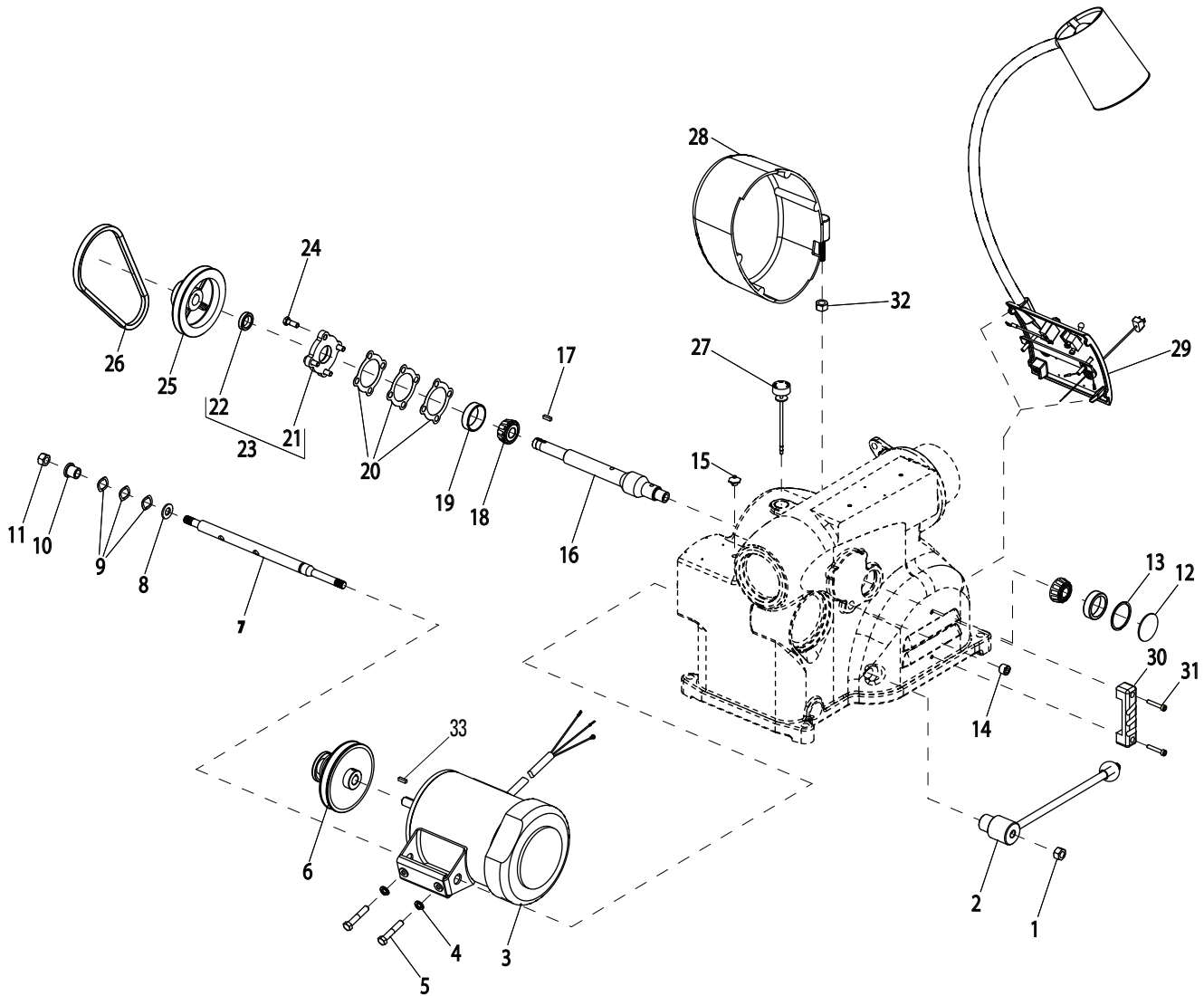
* See exploded view, page 7.

Cross Feed Drive Assembly



Item No	Part No.	Description
1	902308	Set Screw
2	903393	Bearing, Cone
3	903394	Bearing, Cup
4	929643	Strain Relief, Heyco
5	8106301	Screw, Hex Washer Head
6	8180217	5/16-18 x 3/8" Set Screw
7	95000022	Belt, Polygroove
8	95000029	Housing, Bearing
9	95000030	Gearmotor, Crossfeed
10	95000032	Bracket, Mtg. Gearmotor
11	95000034	Pulley, Gearmotor
12	95000035	Pulley, Large
13	95000037	Screw, SHC M4-0.7 x 13 MM Lg.
14	95000040	Cross Feed Cover Assembly
15	95000041	4MM Fender Washer
16	95000071	Leadscrew Assembly
17	95000097	Recoiling Cord Assembly

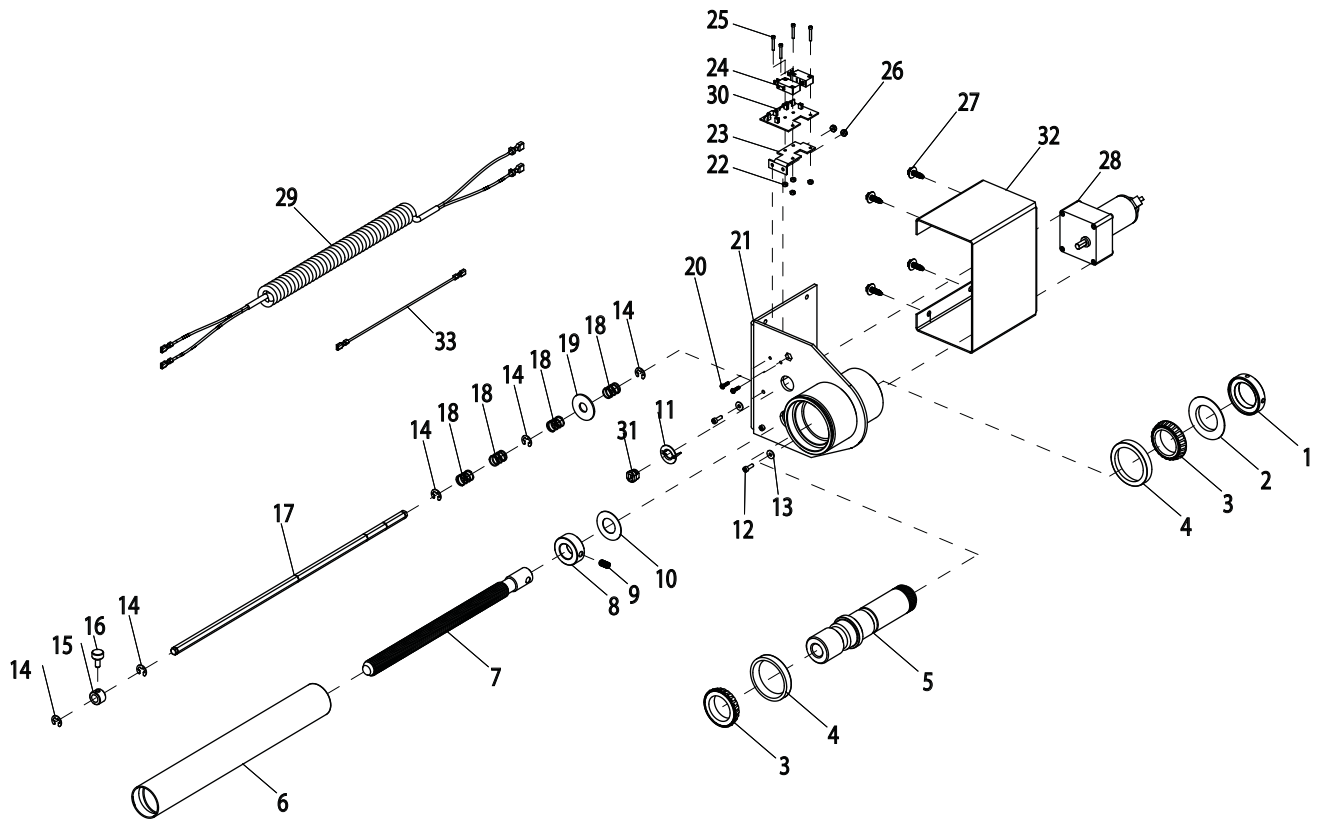
Motor and Worm Gear Drive



Item No	Part No.	Description
1	903377	Nut, Hex
2	95000051	Lever Assembly
3	902165	Motor/Brkt Assy, 115/220VAC-60Hz
	921743	Motor/Brkt Assy, 220VAC-50Hz
4	921557	Washer, Lock
5	906101	Screw, Hex Hd. Cap
6	95000036	Pulley, Variable Speed
7	95000050	Shaft, Motor
8	871100257	Washer, 1/2" Flat
9	*902364	Washer, Wave (*Qty As Required)
10	903223	Bushing, Motor Mount Shaft
11	903377	Nut, Hex
12	903166	Welch Plug
13	903172	Ring, Retaining I.D.
14	903372	Plug, Allen Pipe
15	922006	Fitting, Grease
16	940140	Shaft, Worm W/Square Keyway
17	940139	Key, Square
18	903393	Bearing, Cone

Item No	Part No.	Description
19	903394	Cup, Bearing
20	903169	Shim, 0.005" (*Qty As Required)
	903170	Shim, 0.007" (*Qty As Required)
	903171	Shim, 0.020" (*Qty As Required)
21	903010	Cap, Bearing Seal
22	903163	Seal, Oil
23	903186	Cap and Seal Assy.
24	900236	Screw, Hex Hd. Cap
25	95000033	Pulley, Wormshaft
26	95000076	Belt, 4L260W Heavy Duty FHP
27	903148	Dipstick
28	95000078	Belt Guard
29	95000122	Panel Assy., Electrical, 115V-60Hz
	95000131	Panel Assy., Electrical, 220V-60Hz
	9500013101	Panel Assy., Electrical, 220V-50Hz
30	95000065	Detent Block
31	900207	Screw, 1/4-20 x 1" Lg. SHCS
32	8301035	Nut, Hex, Lock 3/8-16
33	95000277	Key - Motor, 4000E

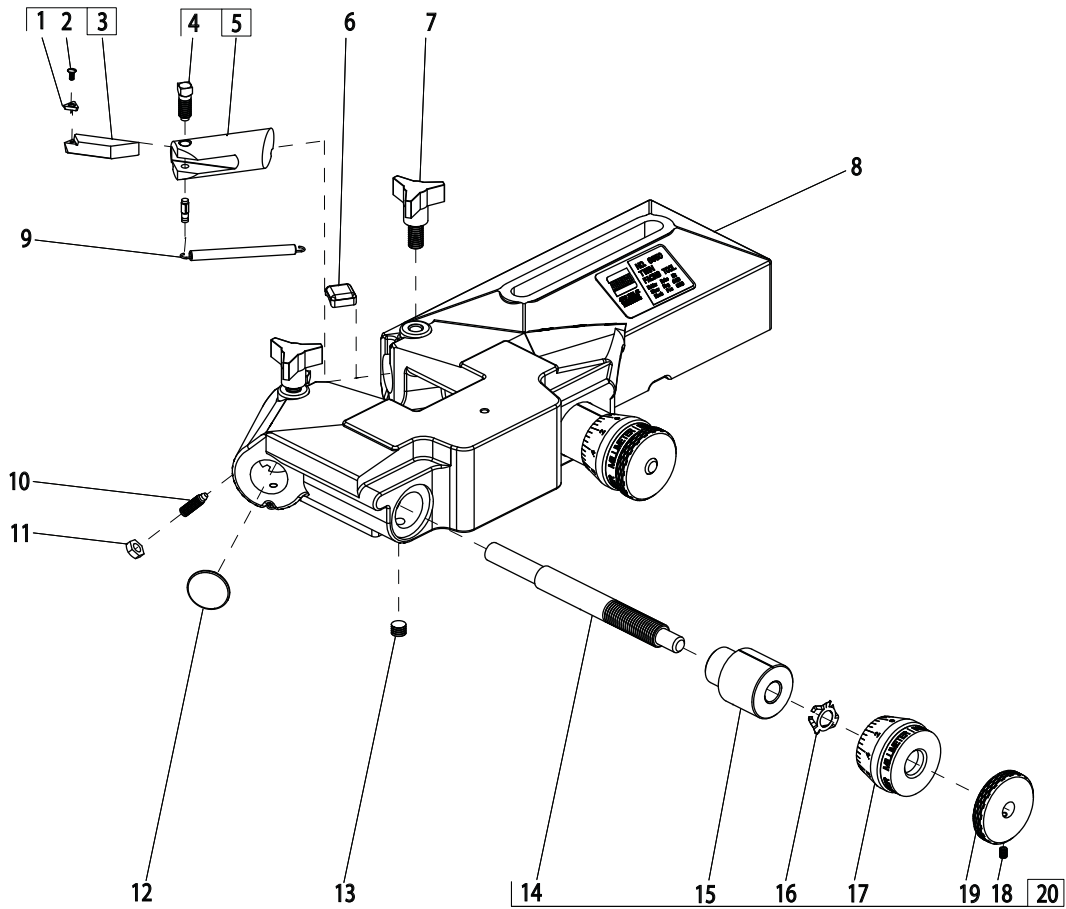
Drum Feed Assembly



Item No	Part No.	Description
1	909443	Nut, Bearing Lock
2	909444	Washer, Spherical
3	903391	Bearing, Taper Roller
4	903392	Cup, Bearing
5	903154	Spindle Extension
6	907703	Boot & Spring
7	95000057	Lead Screw, Drum Feed
8	95000080	Set Collar
9	95000081	Screw, SHSS
10	95000082	Washer, Thrust Bearing
11	929642	Adapter, Heyco Knock-out
12	95000037	Screw
13	95000041	Washer, Fender
14	95000060	E-ring
15	903039	Collar, Stop
16	903084	Screw, Knurled

Item No	Part No.	Description
17	95000058	Rod, Stop
22	95000357	4-40 Nut
23	95000062	Bracket, Switch
24	8113334	Switch, Micro
25	95000064	Screw, SHC
26	8111055	Nut, Hex Lock
27	8106301	Screw, HWHST
28	95000083	Gearmotor, Drum Feed
29	95000097	Recoiling Cord Assembly
30	95000114	PCB, Limit Switch
31	929643	Relief, Heyco Strain
32	95000061	Wrapper, Drumfeed
33	95000118	Wire Assembly

6950 Twin Cutter



Item No	Part No.	Description
*1	907681	Carbide Insert, Positive Rake
2	906499	Screw, #4-40 X .25 Oval Head
*3	940559	Holder, Tool Bit, RH, Positive Rake
*	940560	Holder, Tool Bit, LH, Positive Rake
4	909249	Screw, Square Head Set
5	910650	Toolholder, Left Hand
	910651	Toolholder, Right Hand
6	928584	Gib, Brass, Tool Holder
7	906854	Screw, Lock
8	928572	Twin Cutter Housing
9	906905	Spring
10	906879	Screw, Locating
11	903528	Nut, Hex
12	906977	Plug, Dot

Item No	Part No.	Description
13	906109	Screw, 3/16-16 Set
14	906908	Rod, Dial
15	906906	Plug, Dial
16	906929	Washer, Spring
17	906907	Dial, Micrometer
18	903338	Screw, Set
19	906923	Knob, Dial Rod
20	906901	Dial Assembly

Note: These parts are not included with the 6950 Twin Cutter tool.