

WHEEL ALIGNER



IMAGING WHEEL ALIGNMENT SYSTEMS

High-resolution imaging technology
delivers speed and accuracy

SERIES **V2300**

JohnBean[™]

V2300

FULLY FEATURED, HIGHLY ACCURATE WHEEL ALIGNMENT SYSTEMS

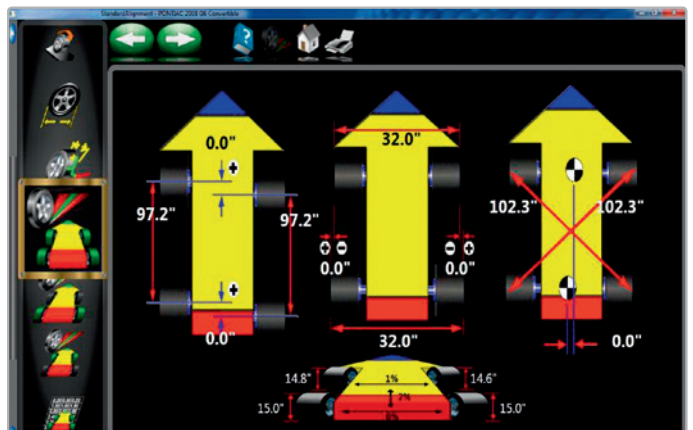
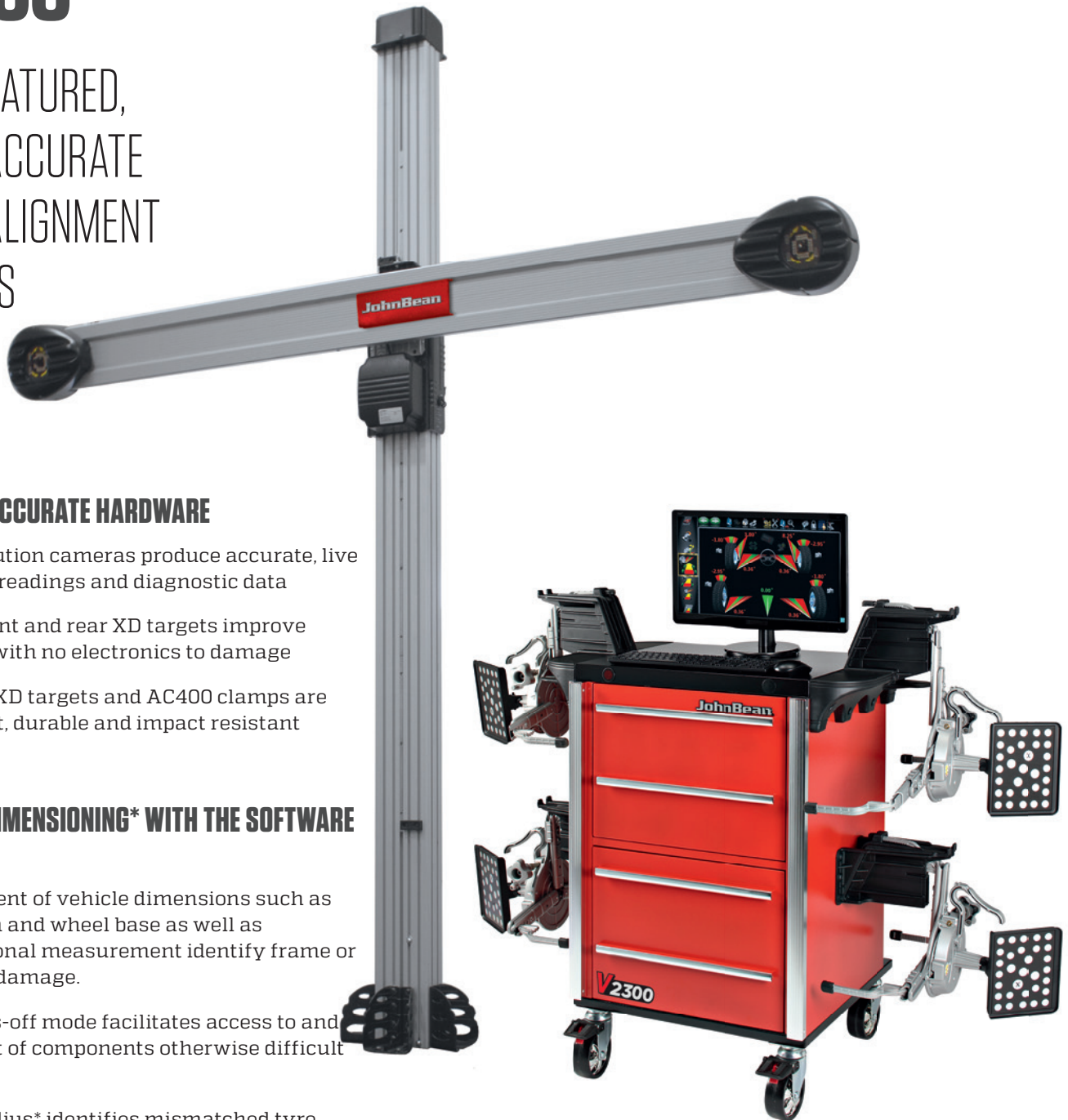
VERSATILE, ACCURATE HARDWARE

- High-resolution cameras produce accurate, live alignment readings and diagnostic data
- Passive front and rear XD targets improve durability with no electronics to damage
- Advanced XD targets and AC400 clamps are lightweight, durable and impact resistant

ADVANCED DIMENSIONING* WITH THE SOFTWARE PRO42 GOLD

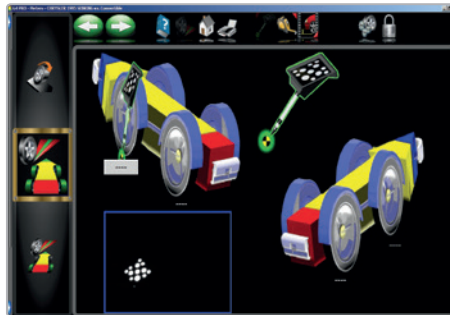
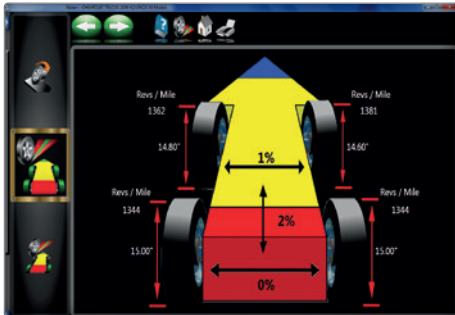
- Measurement of vehicle dimensions such as track width and wheel base as well as cross-diagonal measurement identify frame or structural damage.
- The wheels-off mode facilitates access to and adjustment of components otherwise difficult to reach.
- Rolling Radius* identifies mismatched tyre sizes - a potential cause of vehicle pulling and driver complaints

*Patented and/or patent-pending features



PROFESSIONAL SOLUTION FOR CUSTOMER SATISFACTION

Patented imaging technology provides accurate and real-time measurements that improve productivity. User-friendly features such as EZ-TOE*, VODI* and an extensive vehicle specification database deliver customer satisfaction, ease of use and accuracy.



AC400 CLAMPS WITH XD TARGETS

Weighing in at 3.13 kg (6.9 lbs) and measuring only 152 x 203 mm (6" x 8") in the front and rear, the AC400/XD package is the smallest and lightest we've ever made

RIDE HEIGHT* MEASUREMENT

Measure ride height and obtain proper alignment specs for those vehicles requiring it

EZ-TOE*

Turn the front wheels and access difficult adjustment points while still displaying centred toe readings

USER-FRIENDLY INTERFACE

Use available step-by-step instructions as a guide for completing even the most complex tasks

MANUFACTURER SPECS

Extensive OEM specs allow quick and accurate vehicle selection

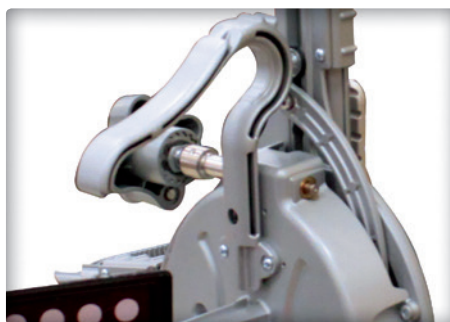
VODI™

Vehicle Orientation Directional Indicator* - guides the technician through the measurement process

HELPVIDEOS

View detailed videos of how to make needed adjustments to complete even the most complex tasks

AVAILABLE WITH THE JOHN BEAN AC400 NON-CONTACT ALIGNMENT WHEEL CLAMPS



SECURE CLAMPING WITHOUT TOUCHING THE RIM

- Only the tyre is contacted
- Clutch limited clamping force ensures accurate and repeatable results
- Durable and lightweight magnesium construction
- Alternatively, AC100 universal wheel clamps made of cast aluminum, with no limitation on tyre diameter

AC400: FAST AND EASY TO USE

- Clamping is accomplished with a single fast-action adjustment knob
- No accessories needed to accommodate the full range of tyre sizes
- Large, comfortable handle allows ergonomic use
- XD targets are lighter and take up less space than previous designs

*Patented and/or patent-pending features

SPECIFICATIONS AND ACCESSORIES

SPECIFICATIONS

Track width	121.9 cm - 243.8 cm
Wheel Base	200.7 cm - 457.2 cm
Shipping weight	227 kg
Power requirements	230 V 1ph 50-60 Hz

Specifications AC400

Tyre diameter	19" - 39" (48.3 cm - 99.1 cm)
Weight	3.13 kg
Clamping force	164.6 N
Construction	Cast magnesium

Specifications AC100

Rim clamping range	11" - 22"
Weight	4.9 to 5.2 kg
Construction	Cast aluminium

Standard accessories

Wheel clamps & targets
Steering wheel holder
Brake pedal depressor
Two wheel chocks
Colour printer

* Standard with V2300 AC100

** Standard with V2300 AC400

OPTIONAL ACCESSORIES

AC100 universal wheel clamp kit*:
EAK0320J36A

AC400 wheel clamp kit**:
EAK0320J35A

Drive-on camera aid:
EAK0289J91A

Mobility kit:
EAK0320J78A

Hub adaptor kit for wheels-off
alignment (AC100/AC400):
EAK0222J83B

AC100 universal wheel clamp
extension kit:
30926

AC400 dual wheel adaptor kit:
EAK0305J50A

Dual tall support kit:
EAK0289J80A

Centre tall support kit:
4031236

Dual short support kit:
EAK0289J81A

Centre short support kit:
4031234

Tilt camera beam:
4031154

EMEA-JA

Snap-on Equipment s.r.l. · Via Prov. Carpi, 33 · 42015 Correggio (RE)
Phone: +39 0522 733-411 · Fax: +39 0522 733-479

France

Snap-on Equipment France · ZA du Vert Galant · 15, rue de la Guivernone BP
97175 · Saint-Ouen-l'Aumône · 95056 Cergy-Pontoise CEDEX
Phone: +33 134 48 58-78 · Fax: +33 134 48 58-70

Germany

Snap-on Equipment GmbH · Konrad-Zuse-Straße 1 · 84579 Unterneukirchen
Phone: +49 8634 622-0 · Fax: +49 8634 5501

Italy

Snap-on Equipment s.r.l. · Via Prov. Carpi, 33 · 42015 Correggio (RE)
Phone: +39 0522 733-411 · Fax: +39 0522 733-410

United Kingdom

Snap-on Equipment Ltd. · Unit 17 Denney Road, King's Lynn · Norfolk PE30 4HG
Phone: +44 118 929-6811 · Fax: +44 118 966-4369

Part of the machines is illustrated with optional extras which are available
at extra cost. Technical and visual modifications reserved.

Cod. 9702 662 · 06/2019

JohnBean
www.johnbean.com